



# **BHARATI VIDYAPEETH**

(Deemed to be University)

Pune, India.

- Accredited with 'A+' Grade (2017) by NAAC
- 'A' Grade University Status by MHRD, Govt. of India
- Accredited (2004) & Reaccredited (2011) with 'A' Grade by NAAC
- Category-I (Deemed to be University Grade) by University Grants Commission
- Recognized under Section '12 B' of UGC Act (1956) by University Grants Commission
- Ranked 63rd among Top 100 Universities by NIRF 2020, MHRD Govt. of India



INFORMATION BROCHURE OF ENTRANCE TEST

## **M.ARCH. - 2021**

FOR ADMISSION TO THE POST GRADUATE DEGREE COURSE

M.ARCH. - 2021

At

Bharati Vidyapeeth (Deemed to be University), Pune

College of Architecture, Pune

Excellence In Imparting Architectural Education...

## Important Dates M.ARCH. - 2021

A)

Entrance Test	Last Date of Online Application	Date of Online Entrance Test	Date of Declaration of Merit list
<b>M.ARCH. - 2021</b> (Date of computer centre / home based online entrance test)	<b>1st August 2021</b>	<b>8th August 2021</b>	<b>Will be notified</b> <b>at</b> <b><a href="http://www.bvuniversity.edu.in">www.bvuniversity.edu.in</a></b>

B) Counselling &amp; on the spot admissions

**Will be notified**

### OUR INSTITUTE (For information)

#### Pune

Bharati Vidyapeeth (Deemed to be University)

#### College of Architecture

Katraj-Dhankawadi , Pune – 411 043.

Tel – Tel. No. 020-24376986, 24375687,

Fax : +91-02-24376986

C) Commencement of Classes

**Will be notified**



**Hon'ble Dr. Patangrao Kadam**

Founder : Bharati Vidyapeeth (1964)

FOUNDER - CHANCELLOR: Bharati Vidyapeeth (Deemed to be University)

: Vision of the University :  
To be a world class University for Social Transformation through Dynamic Education



**Hon'ble Dr. Shivajirao Kadam**  
Chancellor,  
Bharati Vidyapeeth  
(Deemed to be University), Pune



**Hon'ble Dr. Vishwajeet Kadam**  
Secretary,  
Bharati Vidyapeeth  
Pro Vice Chancellor,  
Bharati Vidyapeeth  
(Deemed to be University), Pune



**Hon'ble Dr. Manikrao Salunkhe**  
Vice Chancellor,  
Bharati Vidyapeeth  
(Deemed to be University), Pune





राष्ट्रीय मूल्यांकन एवं प्रत्यायन परिषद  
विश्वविद्यालय अनुदान आयोग का स्वायत्त संस्थान  
**NATIONAL ASSESSMENT AND ACCREDITATION COUNCIL**  
An Autonomous Institution of the University Grants Commission

## *Certificate of Accreditation*

*The Executive Committee of the  
National Assessment and Accreditation Council  
on the recommendation of the duly appointed  
Peer Team is pleased to declare the  
Bharati Vidyapeeth University  
(Deemed to be University u/s 3 of the UGC Act, 1956)  
Sadashiv Peth, Pune, Maharashtra as  
Accredited  
with CGPA of 3.53 on seven point scale  
at A<sup>+</sup> grade  
valid up to March 27, 2024*

*Date : March 28, 2017*



*DP Singh*  
Director

EC(SC)/23/A&A/36.3

## National Institutional Ranking Framework- 2020

### Ministry of Human Resource Development Government of India



Maintaining its tradition in academic excellence, in the fifth consecutive year, Bharati Vidyapeeth (Deemed to be University), Pune and its constituent units have the reason to be proud for getting recognized and ranked among leading Universities and Institutes in India. Bharati Vidyapeeth is probably the only educational organization in the country to have 4 institutes having high NIRF ranking.

Poona College of Pharmacy, Pune  
ranked 22nd at the national level  
under Pharmacy category

Institute of Management and  
Entrepreneurship Development (IMED),  
Pune ranked 63rd at the national level  
under Management category

Rajiv Gandhi Institute of IT and  
Biotechnology, Pune, ranked 42nd at the  
national level under College category

College of Engineering, Pune, ranked  
99th at the national level under  
Engineering category

## University Achievements:

Accredited with 'A+' Grade (2017) by NAAC

'A' Grade University Status by MHRD, Govt. of India

Accredited (2004) & Reaccredited (2011) with 'A' Grade by NAAC

Category-I (Deemed to be University Grade) by University Grants Commission

Recognized under Section '12 B' of UGC Act (1956) by University Grants Commission

Ranked 63<sup>rd</sup> among Top 100 Universities by NIRF 2020, MHRD Govt. of India

## Other Achievements of the University:



### NBA

• College of Engineering has been accredited with National Board of Accreditation for its 5 PG courses.



### NABH

• Bharati Hospital and Research Centre of Medical College has undergone assessments for full NABH accreditation.



### NABL

• Hospital Laboratories in Pathology, Microbiology and Biochemistry have been accredited with NABL.



### NABH & FDA Approval

• NABH accreditation and FDA approval for Hospital Blood Bank, Safe-I accreditation of the NABH for Infectious diseases was also received.

## BHARATI VIDYAPEETH

Bharati Vidyapeeth, the parent body of Bharati Vidyapeeth (Deemed to be University) was established on 10th May 1964, by distinguished educationist Hon'ble Dr. Patangraoji Kadam, with a mission of promoting "Social Transformation Through Dynamic Education". Since its establishment, it has maintained the highest standards and has proliferated innovative practices in the education sector.

In the year 2013-14, Bharati Vidyapeeth celebrated the glorious Golden Jubilee year of imparting education and inculcating moral values among the youth. During the last 5 decades, Bharati Vidyapeeth has made astonishing strides in the field of education. Today it is one of the largest educational organizations in the country that imparts education right from the pre primary to the doctoral level. The spectrum of Bharati Vidyapeeth institutions of higher education spans all professional disciplines which include the colleges of Medicine, Dentistry, Nursing, Audiology, Optometry, Ayurved, Homeopathy, Engineering, Architecture, Management, Law, Pharmacy, Hotel Management and Catering Technology, Environment Education, Physical Education, Health Management, Biotechnology etc.



Research too is given a high priority in the university. To promote research activities and to create a research culture on its campuses, Bharati Vidyapeeth has established three self-financed specialized research institutes in the areas of Health Related Sciences, Pharmaceutical Science, and Social Sciences.

The colleges are affiliated to various universities including Bharati Vidyapeeth (Deemed to be University), University of Pune, University of Mumbai, Shivaji University Kolhapur and Indraprastha University, Delhi.

With an objective of making educational opportunities available to the deprived sections of the country, Bharati Vidyapeeth has established a large number of educational institutions in the rural areas. Bharati Vidyapeeth with a very moderate beginning in a short span of time has grown leaps and bounds having its major campuses in New Delhi, Navi Mumbai, Pune, Solapur, Kolhapur, Sangli, Karad, Satara and Panchgani.



## Bharati Vidyapeeth (Deemed to be University) Pune

Bharati Vidyapeeth (Deemed to be University) came into existence in April, 1996, when the Ministry of Human Resource Development, Government of India, on the recommendations of UGC conferred the status of University on a cluster of 12 institutions of Bharati Vidyapeeth. In appreciation of the academic excellence achieved by the institutions through a committee of experts. Subsequent to that, the Government of India, vide its various notifications brought several other institutions of Bharati Vidyapeeth under the ambit of this University. As on today the University is having 29 constituent units conducting programmes in 12 different disciplines. Bharati Vidyapeeth (Deemed to be University) is one of the largest multi- faculty, multi-campus Deemed to be University in the country which has created a very laudable track record of academic achievements since its inception.

It offers a variety of programmes in 12 faculties namely:

1. Faculty of Medical Sciences
2. Faculty of Dentistry
3. Faculty of Ayurved
4. Faculty of Homoeopathy
5. Faculty of Nursing
6. Faculty of Engineering and Technology
7. Faculty of Pharmaceutical Sciences
8. Faculty of Management Studies
9. Faculty of Arts, Social Sciences and Commerce
10. Faculty of Sciences
11. Faculty of Law
12. Faculty of Interdisciplinary Studies

The twenty nine constituent institutions of the University are located in eight different campuses; two in Pune, and one each in New Delhi, Navi Mumbai, Kolhapur, Solapur, Sangli and Karad.

The UGC has also recognized this University u/s12(B) of UGC Act 1956. This University is a Member of Association of Indian Universities and has been a Member of Association of Common wealth Universities.





The University is academically and intellectually very productive. Its faculty members have a very remarkable track record of research publications and patents. It has digitalized the libraries in its constituent units and has been making an extensive use of modern Information and Communication Technology in teaching, learning, research and also administration. The University attracts students from all over India and around 35 countries due to its academic reputation.

## Distinctive Features of Bharati Vidyapeeth (Deemed to be University)

- Accredited with 'A+' Grade by NAAC in 2017 for seven years.
- 'A' Grade University status by MHRD, Govt. of India
- Category-I (Deemed to be University Grade) by University Grants Commission
- Recognised under Section '12 B' of UGC Act (1956) by University Grants Commission
- Ranked 63rd among top 100 Universities by NIRF 2020, MHRD, Govt. of India
- The University offers 250+ programmes under 12 faculties.
- High quality of all-around education has attracted many students from all over India and 35 countries to pursue their studies. Presently there are 23000+ students enrolled into various programmes offered by the University.
- Behind the reputation of the University are the solid credentials of accomplished and experienced 1700+ faculty members, imparting quality education.
- Excellent placements record for its students across faculties and has known industry endorsements.
- Strong alumni network spread across the globe.
- Programmes are designed to enhance employability of students with focus on collaborative and experiential learning pedagogy.
- Entrepreneurship cell has been established to develop entrepreneurial skill and incubate innovative business ideas.
- University constantly encourages and facilitates its faculties to be actively engaged in academic research and publications besides their teaching assignments by establishing collaborative and interdisciplinary research links with industries and institutions around the world.
- All professional programmes are approved by respective Statutory Councils.
- As part of dissemination of knowledge, University organizes International and National Conferences, Seminars, Workshops etc., in recent and upcoming themes.
- Knowledge Resource Centre (Libraries) has an excellent collection of books, print journals, e-journals, and magazines etc. which are regularly being expanded by adding latest publications.
- Augmented infrastructural facilities including smart classrooms, tools for blended learning, laboratories equipped with latest technologies, free accessibility to Wi-Fi, lush green campuses, adequate recreational facilities, on campus residential accommodation etc.
- University is committed to engage for the welfare of the society through various schemes of outreach Programmes and Field work.

## Digital Initiatives at BVDU:

University's Information and Communication Technology Centre always acts proactively to meet the dynamic requirements of the University and its constituent units. Its contribution encompasses all spheres of the University – academics, research, administration and governance.

Some of these ICT Services are listed as bellow:





## Skill Development Initiatives at BVDU:

भारती विद्यापीठ ग्रामीण विकास प्रतिष्ठान



Bharati Vidyapeeth College of Nursing, Navi Mumbai



BVDU College of Architecture, Pune



BVDU Dental College & Hospital, Sangli



BVDU Institute of Hotel Management and Catering Technology, Pune



BVDU Medical College & Hospital, Pune



BVDU Center for Health Management Studies and Research



BVDU Poona College of Pharmacy, Pune



BVDU Medical College & Hospital, Sangli



Bharati Vidyapeeth College of Nursing, Sangli



BVDU Institute of Management and Entrepreneurship Development, Pune



BVDU Rajiv Gandhi Institute of Information Technology & Biotechnology, Pune





## Constituent Units of Bharati Vidyapeeth (Deemed to be University)

### Health Sciences:

#### 1. Faculty of Medical Sciences

- Medical College, Pune  
School of Audiology and Speech Language Pathology, Pune  
School of Optometry, Pune
- Medical College and Hospital, Sangli  
School of Optometry, Sangli

#### 2. Faculty of Dentistry

- Dental College and Hospital, Pune
- Dental College and Hospital, Sangli
- Dental College and Hospital, Navi Mumbai

#### 3. Faculty of Ayurved

- College of Ayurved, Pune

#### 4. Faculty of Homoeopathy

- Homoeopathic Medical College, Pune

#### 5. Faculty of Nursing

- College of Nursing, Pune
- College of Nursing, Sangli
- College of Nursing, Navi Mumbai

### Engineering & Technology

#### 6. Faculty of Engineering and Technology

- College of Engineering, Pune
- College of Architecture, Pune

#### 7. Faculty of Pharmaceutical Sciences

- Poona College of Pharmacy, Pune

### Management

#### 8. Faculty of Management Studies

- Institute of Management and Entrepreneurship Development, Pune
- Institute of Management and Research (BVIMR), Delhi

- Institute of Management, Kolhapur
- Institute of Management and Rural Development Administration, Sangli
- Yashwantrao Mohite Institute of Management, Karad
- Abhijit Kadam Institute of Management and Social Sciences, Solapur
- Institute of Hotel Management and Catering Technology, Pune

### Social Sciences and Humanities

#### 9. Faculty of Arts, Social Sciences and Commerce

- Yashwantrao Mohite College of Arts, Science and Commerce, Pune  
School of Performing Arts, Pune
- Social Sciences Centre, Pune
- College of Physical Education, Pune

#### 10. Faculty of Sciences

- Rajiv Gandhi Institute of Information Technology and Biotechnology, Pune
- Institute of Environment Education and Research, Pune

#### 11. Faculty of Law

- New Law College, Pune  
Bharati Vidyapeeth Department of Law, New Delhi

### Faculty of Interdisciplinary Studies

#### 12. Research Institutes:

- Interactive Research School for Health Affairs, Pune
- Yashwantrao Chavan Institute of Social Sciences Studies & Research, Pune
- Research and Development Centre in Pharmaceutical Sciences and Applied Chemistry



## BHARATI VIDYAPEETH (DEEMED TO BE UNIVERSITY) COLLEGE OF ARCHITECTURE

### THE RIGHT CHOICE :

In keeping with the tradition Bharati Vidyapeeth University has started M.Arch. (Sustainable Architecture) PG Course for the first time in Maharashtra State and in India from August 2006.

The field of Architecture continues to assure greater demand with the ever increasing requirements of housing, designing & construction of various types of structures needed for the Nation building. Due to increasing trend of Urbanisation, there is an increase in the demand of accommodation, both residential as well as industrial. Thus great opportunity exists for trained personnel in Architectural field. There is also a great potential for Architects to develop into successful entrepreneurs.

Bharati Vidyapeeth (Deemed to be University), College of Architecture is an institute dedicated to provide quality professional education in the field of Architecture. We impart our students the knowledge & specific skills necessary to lead successful lives and to grow into positions of influence & leadership in their profession.

Bharati Vidyapeeth (Deemed to be University), College of Architecture has been engaged in preparing students to make successful careers for more than a decade. Along the way, we have developed our own way of doing things, things that our students like and things that employees / clients like & appreciate too.

As a part of Bharati Vidyapeeth, we contribute in our own way to the vision of our founder, Dr. Patangrao Kadam - "Social Transformation through Dynamic Education", by nurturing the spirit of professional education as a source and a system to shape the individuals to become competent professionals & responsible human beings of the society.

### OUR GOALS :

- F Ensuring maximum exposure & interaction of students with the professionals, and building industry.
- F Continually upgrading & modernizing the educational environment for excellence.
- F Establishing center for studies in Energy Conservation & Environment Protection.
- F Encouraging financial resource generation activities for self-sustenance.
- F Helping intelligent but poor students to acquire higher education.

Realising the increasing importance of Architecture as a profession, Dr. Patangrao Kadam, the founder of Bharati Vidyapeeth with his unusual futuristic vision established College of Architecture, Pune in 1994.

Over the years, the college has established itself as an ideal centre of Architectural Education.



## BHARATI VIDYAPEETH DEEMED UNIVERSITY, PUNE COLLEGE OF ARCHITECTURE

### WELCOME MESSAGE FROM THE PRINCIPAL :

Bharati Vidyapeeth (Deemed to be University) is a multi-disciplinary and faculty University which includes colleges of Architecture, Engineering, Management, Medical, Pharmacy, etc where students can learn a lot from various activities in the college campus itself. This University has several campuses across the country as well as abroad. The Dhankawadi, Pune is one of the prime campus of Bharati Vidyapeeth (Deemed to be University) and is spread across 85 acres of land which is very conveniently located on Pune-Satara road. It houses 24 colleges of various disciplines major among them are the Medical College, Dental College & College of Engineering Pune. This campus has a fully developed football and sports ground of 5 acres. It also houses the Bharati Hospital, and an Ayurved and Homeopathic Hospital, There are Hostels on campus for students, staff quarters, canteens, an ATM centre, Bharati Bank Branch, 24 hrs open Medical Store, Mess facility and the campus is a well maintained environment friendly green campus.

The Bharati Vidyapeeth (Deemed to be University) College of Architecture all faculty's are post graduates while some pursuing their PhD's in different fields which includes architecture as well as engineering which helps the students with dealing various academically related issues. The College provide UG as well as PG programmes with research in various fields. The students are given exposure not only to just the academics part but they are also given scope to learn things from themselves and acquire practical knowledge on their own by various live case studies, site visits and hands on workshops & seminars.

We, at Bharati Vidyapeeth (Deemed to be University) College of Architecture have always worked towards furthering our philosophy of value-based education through motto "Social Transformation through Dynamic Education". It gives me immense pleasure in welcoming you to the Bharati Vidyapeeth (Deemed to be University) College of Architecture in Pune. Since its establishment in 1994, the college has guided more than 1400 students to achieve their dream of becoming architects. In the last five years, since the introduction of first Master's Degree in Sustainable Architecture, more than 200 postgraduates have found excellent work opportunities in the fields related to built environment and sustainability. As a college belonging to a reputed university, we have a determined focus of having an independent campus, infrastructure and facilities that would boast international standards. It gives me great pleasure to see, the college make a prominent mark in the field of art & architecture education and students growing aesthetically, intellectually, culturally, and spiritually. The college has NSS unit under which students are trained and motivated to render the social services in rural as well as urban parts for upgrading lifestyle of the people by conducting health, awareness, educational and other services for the community.

The concept of a global village could not have been defined in the world at a better time than today. With fast paced developments taking place in various fields around the world, it has made the world a smaller place. The emergence of India on the world map in recent years as a country that cannot be ignored has made the task at hand more compelling than ever before. We feel very happy to be known as an institution that is gearing to become one of the finest in the country in fields of Architecture. While we are aware of our social responsibility as educators, we also aim at instilling the same spirit of service as professional architects in our students. In addition to building a strong culture of teaching and learning,

we also strive to contribute to the betterment of living conditions for the society through our research and practical projects.

To achieve our goals of excellence in architectural education, we are equipped with the state of the art infrastructure facilities including a fully stocked having more than 5000 books and updated library along with all e-learning resources. The college has a well equipped climatology, survey and levelling laboratory. Highly experienced faculty members, furnished class rooms, studios, computer labs, and construction workshop, etc. The campus of Bharati Vidyapeeth (Deemed to be University) being multi-disciplinary is also an added advantage to the students to learn more architectural variations and observations. On-campus facilities such as hostels, hospital, bank, and playground are also made available to all the students. I am confident, that with the support of management and efficient and dedicated team of forever enthusiastic students, we shall continue to deliver the best architectural education in India.

I hope as Principal I help my students to continue to grow with excellence. I heartily appreciate the guidance of our management and participation of staff and students in the endeavour towards excellence.

As Principal I am very proud of the College achievements and I am absolutely confident that at Bharati Vidyapeeth (Deemed to be University) College of Architecture we not only educate every student, but cater for individual needs and a highly sustainable future, thus ensuring good citizens of India.

Our aim is to transform candidates into good students and then into good professional architects. I invite you to visit us and join hands with us for a brighter future together.

Principal  
**Prof. Dr. B.H.Sutar**





## Alumni & Placements

### Alumni Achievements & Placements

Name	Year of Passing	Achievements/Placement
Ankur Kulkarni	2008	LEED AP BD+C (2011), ECBC Master Trainer (2013), Certified GRIHA Trainer & Evaluator (2015)
Dipti Talwar	2008	Energy Analyst, LEED AP, Environmental Design Solutions, New Delhi
Kewal Parekh	2009	LEED AP, Certified GRIHA Trainer, Energy Analyst, dBHMS, Noida ECBC Master Trainer 2015.
Gaurang Lele	2010	LEED AP, Certified GRIHA Trainer & Evaluator, ECBC Master Trainer 2015, BEE Energy Manager.
Neha Sanghavi	2013	Certified GRIHA Trainer & Evaluator (2013), IGBC AP (2013), ECBC Master Trainer (2014)
Vini Halve	2016	Research Associate, TERI, Bangaluru, Karnataka
Manish Shetty	2017	LEED AP, LEED GA, CII, Hyderabad, Telangana
Sneha Patel	2017	LEED AP, LEED GA, Gujarat Energy Development Agency, Gandhi Nagar
Hinal Parekh	2018	LEED AP, ACCOM, Mumbai
Anwal Virk	2019	Energy and Green Building Consultant, Environmental Design Solutions, New Delhi
Shruti Koshi	2020	Academician and Research Associate , SEED APJ Abdul Kalam School of Environmental Design



## ACADEMIC HIGHLIGHTS 2020 -21

- Winner of the 6th IGBC Green Champion Award under the category of 'Institute encouraging IGBC Accredited Professionals'.
- Professional Association with Indian Green Building Council, GRIHA, PSI, OneistoX and other universities for conducting and organizing training programs, workshops and seminars.
- Indian Green Building Council and Indian Society of Lighting Engineers “Student Chapters” for professional and industry interactions.
- Students Research Publications and Presentations in various national and international conferences in India.
- Annual student exhibition “ Ekatra- Abhivyakti” organized in January 2020 for display of academic work of postgraduate and undergraduate courses.
- Student participation in various national architectural competitions.
- A robust choice based credit system for M.Arch. Course implemented since 2018.
- Professional associations for internships with various firms, organizations and NGO’s in the field of energy, environment, passive design and green building consultancy.
- Joint workshop for Postgraduate Thesis Students organized in association with BN College of Architecture, Pune and Indian Green Building Council Pune Chapter in February 2019.
- IGBC Training Programme and IGBC Accredited Professional (AP) Examination conducted by the institute in March 2019.
- Publication of research papers presented during the National Students’ Conference on Architectural Lighting in issue of LII Light India International in January -February, 2019.

## Associations & Achievements

MoU between BVDU, Pune and ASSOCHAM - MoU is signed BVDU, Pune and ASSOCHAM with aim to complement in India's Sustainability Movement and take it to the next level to promote environment friendly green building design and construction. ASSOCHAM is an organisation to empower Indian enterprises by inculcating knowledge in the global market, propagating Green building through GEM (Green and Eco- friendly Movement) and spread education and awareness of trends of Green and Sustainable Habitat through seminars, workshops and course programs at various venues across India.



**Launch of 126th IGBC Students Chapter at Bharati Vidyapeeth Deemed to be College of Architecture, Pune -43  
Wednesday, 9th August 2017**

The objective of the event was to establish an association with the Green Building Industry as a part of Industry- Institute interaction and an opportunity to our students and faculty to be part of the Green Building Movement in India.



**Welcome Address by Prof. Archana Gaikwad, Course Co-ordinator M.Arch.(SA)**

**Special Address & Address & Presentation on Retrofitting of Pune Municipal Corporation by Ar Namrata Dhamankar, Convener – Students Committee CII IGBC Pune Chapter**

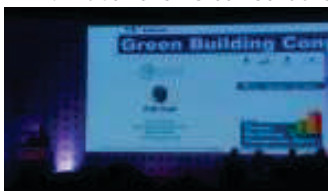


**Brief on IGBC Rating Systems Technologies by Ar Shreyasi Ansingkar, Associate Counsellor CII IGBC**

**Case Study on IGBC Rated Project by Mr Gaurang Lele, Member – Core Committee CII IGBC Pune Chapter & Director Shashwat Consulting**

### Activities with CII & IGBC

- Green Building Study Mission to Capgemini India, Pune Hinjewadi Facility – 29th September 2017
- 15th Edition Green Building Congress 2017 – International Conference & Exhibition on Green Buildings at Jaipur
- 14th Edition Green Building Congress 2016 - International Conference & Exhibition on Green Buildings at Mumbai
- CII IGBC PMC "Session on Green Buildings for Smart Pune"
- 4th Edition of CII Green Conclave at Pune



**Green Building Congress 2016**

**Students Chapter Indian Green Building Council**



# Associations & Achievements

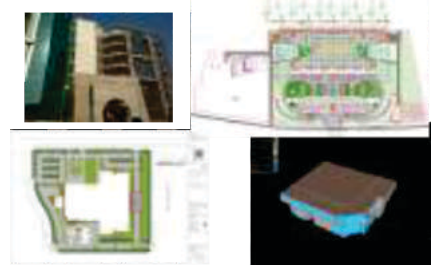
Name	Year	Firm/ Organization	Work Profile
Hinal Parekh	2018	Aecom, Mumbai , Maharashtra	Green Building Consultancy
Pratima Dani	2018	Shrikrishna Aqua Engineering Works, Hubli Karnataka	Environmental Consultancy
Bhavya Sahni	2018	Aecom, Gurgaon	Green Building Consultancy
Sanjana Mishra	2018	M.C. JAIN energy engineers pvt.ltd., Bhilai, Chattisgarh	Energy Consultancy
Manisha Shetty	2017	dbhms, Pvt. Ltd. , Noida, Uttar Pradesh	Green Building Consultancy
Nikita Korgaonkar	2017	Aecom, Gurgaon Green Building Consultancy	
Manisha Sharma	2017	Environmental Design Solutions, New Delhi	Green Building Consultancy
Tanmayee Panse	2017	Lighting Ergonomics, Pune, , Maharashtra	Lighting Consultancy
Neha Kalkar	2017	Ecosan Service Foundation Pune	NGO – Water Management & Awareness
Vini Halve	2016	TERI, Bangalore , Karnataka	Research
Sanghamitra Ghatge	2016	VK:e , Pune , Maharashtra	Green Building Consultancy
Riddhi Soni	2016	Manasaramarchitects, Bangalore, Karnataka	Architectural Consultancy
T. Sahana Prakash	2016	Prithwe, Pune , Maharashtra	NGO – Alternative Materials
Aishwarya Gandhe	2016	Ethereal designs- designers and consultants for lights, Mumbai, Maharashtra	Lighting Consultancy
Suraj Bhunje	2016	Integrated Environmental Solutions (IES), Pune	Simulation Consultancy
Sagar Mistry	2016	Kaizen Design Solutions, Mumbai , Maharashtra	Green Building Consultancy
Ramsagar Vishwa karma	2015	PEC Solutions Green Solutions, Mumbai, Maharashtra	Green Building Consultancy
Monica Sharma	2015	TERI, New Delhi	Research
Vishwa Bhalekar	2014	Coral Architects, Mumbai, Maharashtra	Green Building Consultancy
Sneha Shahapurkar	2014	Green Energy Foundation, Pune,	Maharashtra NGO
Kalyan Chatim Shreelakshmi Menon	2013	Coral Architects, Chennai, Mumbai, Maharashtra	Green Building Consultancy
Karan Sharma	2013	Water Shed Organization Trust, Ahmednagar, Maharashtra	NGO- Water Management
Rahul Shrikhande	2012	TERI, New Delhi	Research



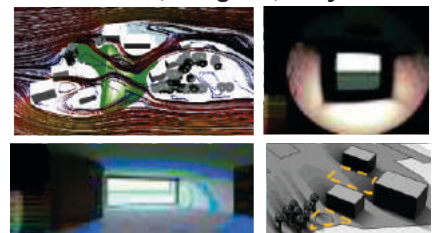
**Shrikrishna Aqua Engg. Works, Hubli**



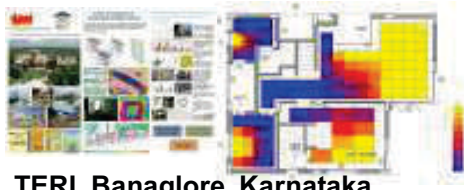
**M.C.Jain Energy Enggs., Pvt. Ltd. , Bhilai**



**AECOM, Gurgaon, Haryana**



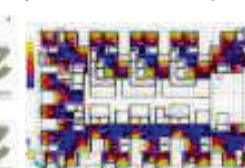
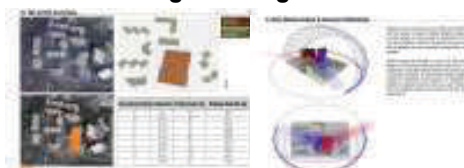
**AECOM, Mumbai, Maharashtra**



**TERI, Banaglore, Karnataka**



**Ethereal designs- designers and consultants for lights, Mumbai, Maharashtra Prithwe , Pune, Maharashtra**



**Kaizen Design Solutions, Mumbai, Maharashtra Biodiversity Conservation of India, Bangalore, Karnataka**

**Internship M.Arch.(SA)**



## Students Chapter Indian Society of Lighting Engineers

To promote industry-institute interaction, a student's ISLE chapter was opened at M.Arch (SA), college of architecture, BVDU, Pune. 25 students and 2 faculties became ISLE members.

The inaugural event was attended by about 50 people including ISLE office bearers, members, lighting professionals, faculty and students. On this occasion, Kausthubh Nandurbarkar delivered a lecture on 'Quality of illumination' which is part of the lecture series for curriculum.



## Activities with ISLE – Pune Local Center

Lecture on Advance Technology in LED and SOLAR by Dr. K. Naveen, Senior General Manager, Bajaj Electricals, Mumbai-

Interaction with industry professionals to get current updates in the lighting field

Lecture on LED technology and application Mr. Sudhir Patil, Pune -

Interaction with industry professionals to get advancements in LED Technology

Lecture by Kausthubh Nandurbarkar delivered a lecture on 'Quality of illumination'-

Students Chapter Indian Society of Lighting Engineers

Interaction with lighting designers and showcase of projects

Research Paper presentation by Tanmayee Panse and Shravani Vaidya , students M.Arch.(SA) at

Luminescence 2017 NATIONAL STUDENT

CONGRESS ON ILLUMINATION to be held at Jadavpur University, Kolkata, West Bengal



## National Student's Conference on Architectural Lighting – NSCAL 2018

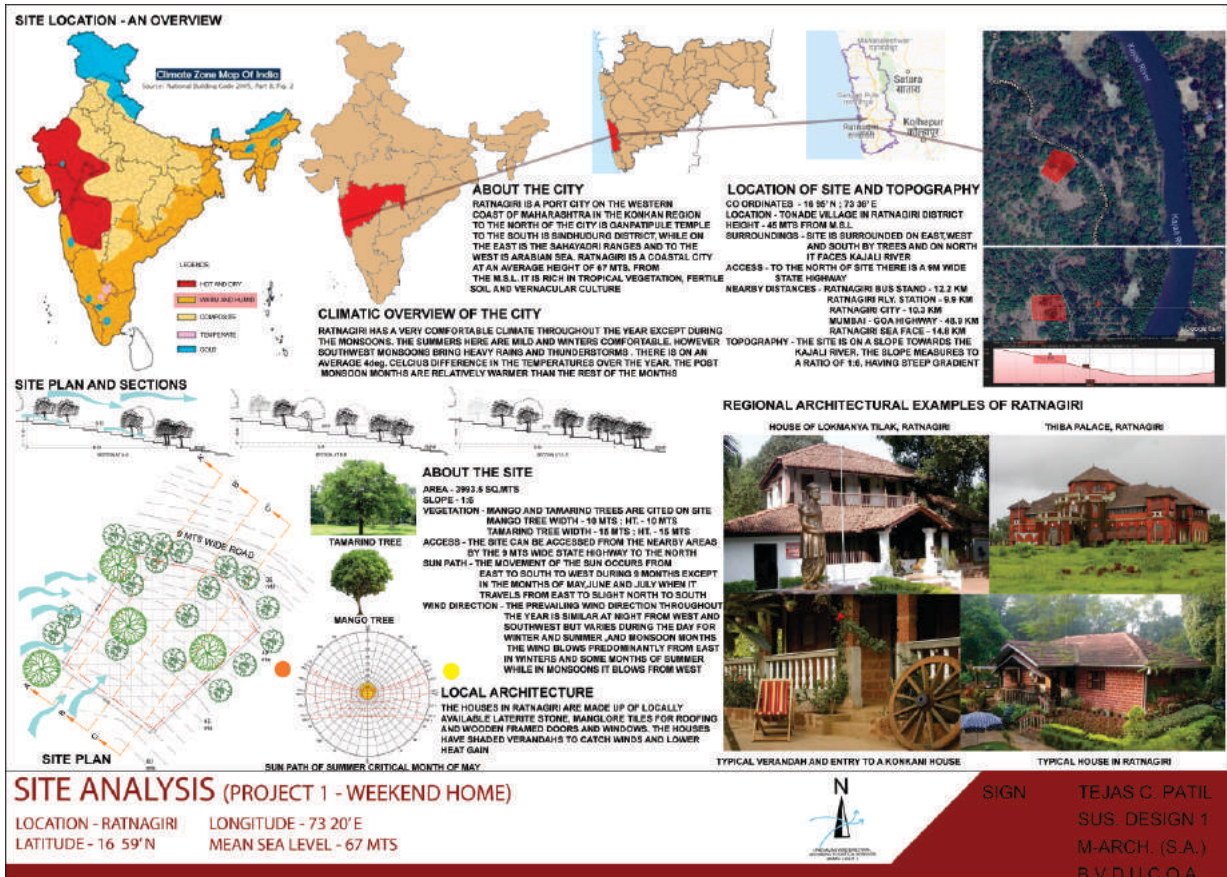


Glimpses  
of  
the  
event

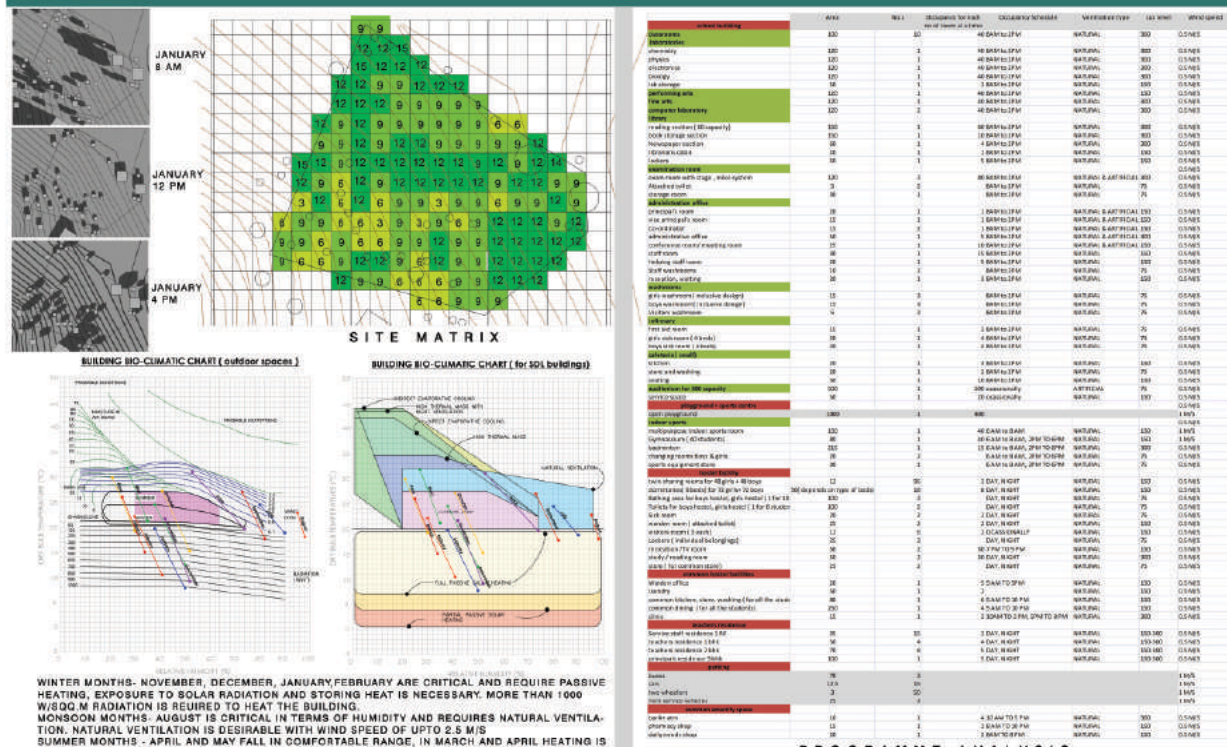
Students Chapter Indian Society of Lighting Engineers



## Academic Projects



## ANALYSIS





## Academic Projects

### SITE SHADOW ANALYSIS...

- The site was divided into various zones for the analysis of shadow pattern on the open pathways in the campus.
- The highlighted portion indicated the Zone 1 extended part of the campus, which accounts a total area of 10162 sq.m. the total number of matured trees in the particular zone are approx.180.
- The shadow analysis is done for three months January, march and may with the critical timings of 9am, 12pm and 3pm which covers the institution span.

#### SITE ANALYSIS FOR JANUARY:



JAN 9 am



JAN 12 noon



JAN 4 pm

#### MARCH:



MARCH 9 am



MARCH 12 noon



MARCH 4 pm

#### MAY:



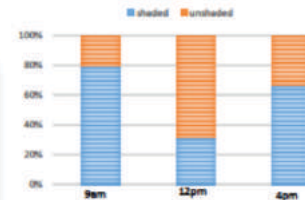
MAY 9 am



MAY 12 noon



MAY 4 pm



The pathways are shaded during the critical months of the year protecting the users from the scorching heat of summer at morning and afternoon except at 12pm, the shadow does not totally cover the pathway.

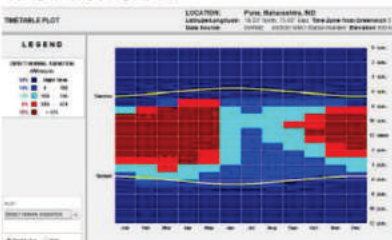


Key plan

INTERPRETATION

### CLIMATIC ANALYSIS contd..

#### RADIATION CHART



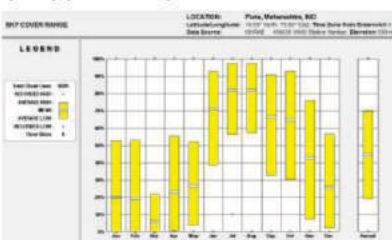
Radiation chart; the maroon zone indicates the harsh radiations which is more than 474W/sq.m of area

#### WIND WHEEL



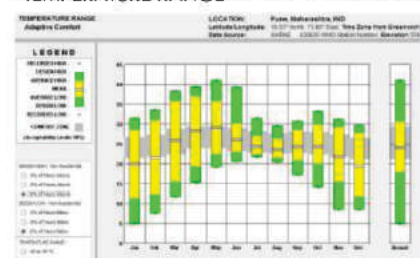
Wind wheel; prevailing wind direction is from West. As pune is surrounded by valleys from all the sides and gets its wind from the western ghats

#### SKY COVER RANGE



The sky is covered in the months of June-October. The chart indicates the average high and average low % of sky cover throughout the year.

#### TEMPERATURE RANGE



The yellow zone depicts the average high and low range. The lowest is in December which is 9 deg c and highest is april which is more than 35 degC. Green zone indicates the designed high and low temperature range.

Source: climate consultant.

DATA



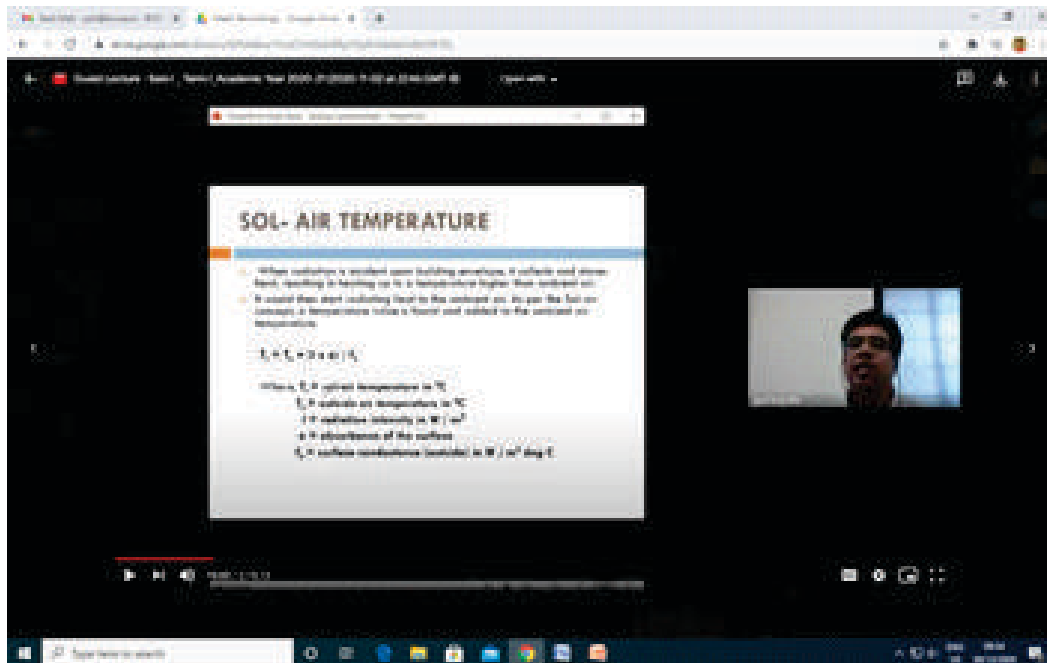
## Co-curricular & Extra Curricular Activities



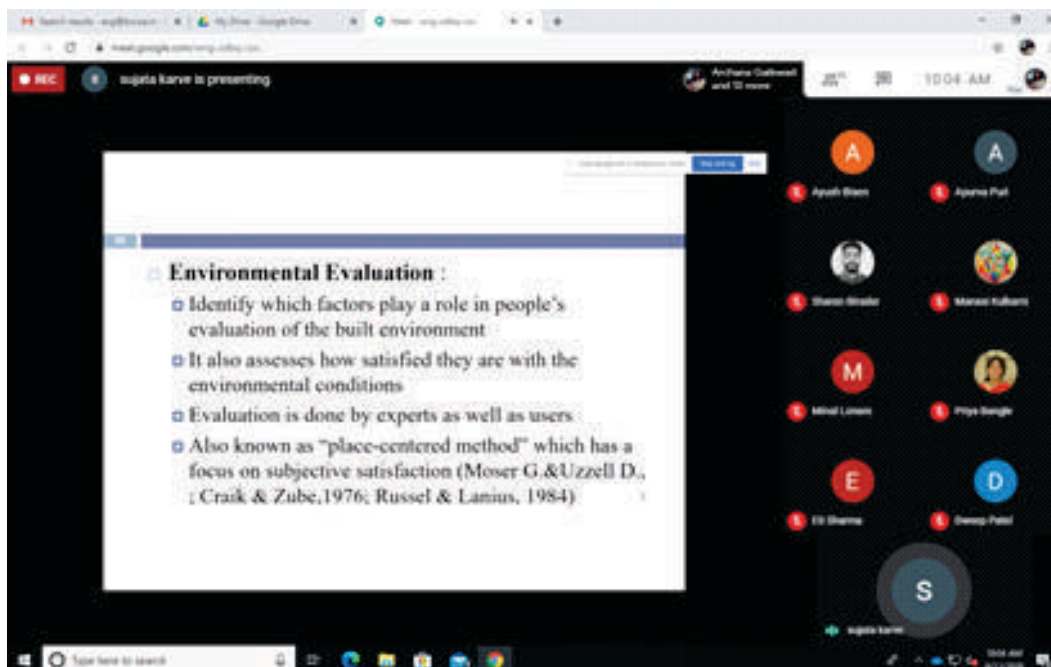


## Co-curricular & Extra Curricular Activities



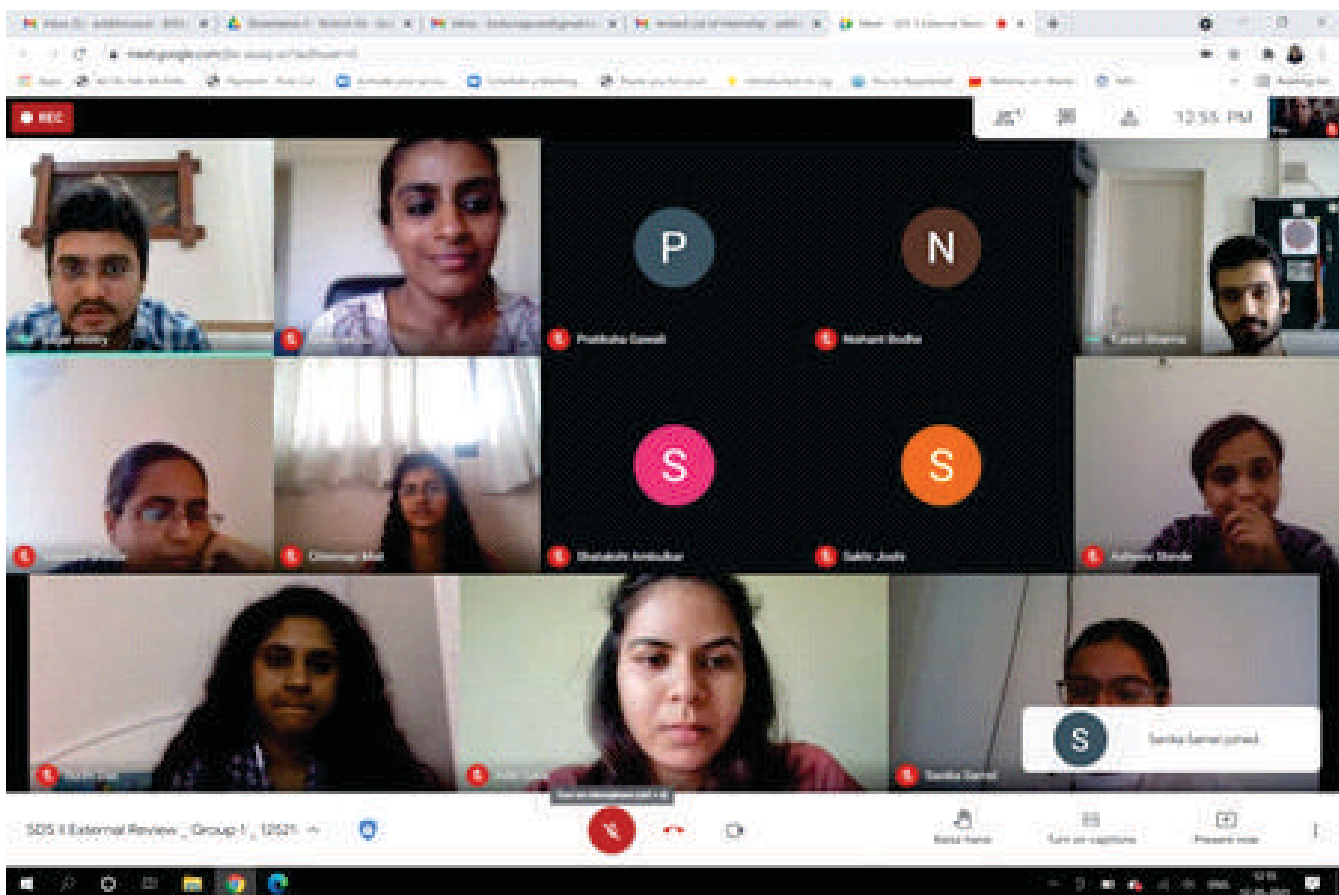


Online interactions with Professionals: Guest Lectures

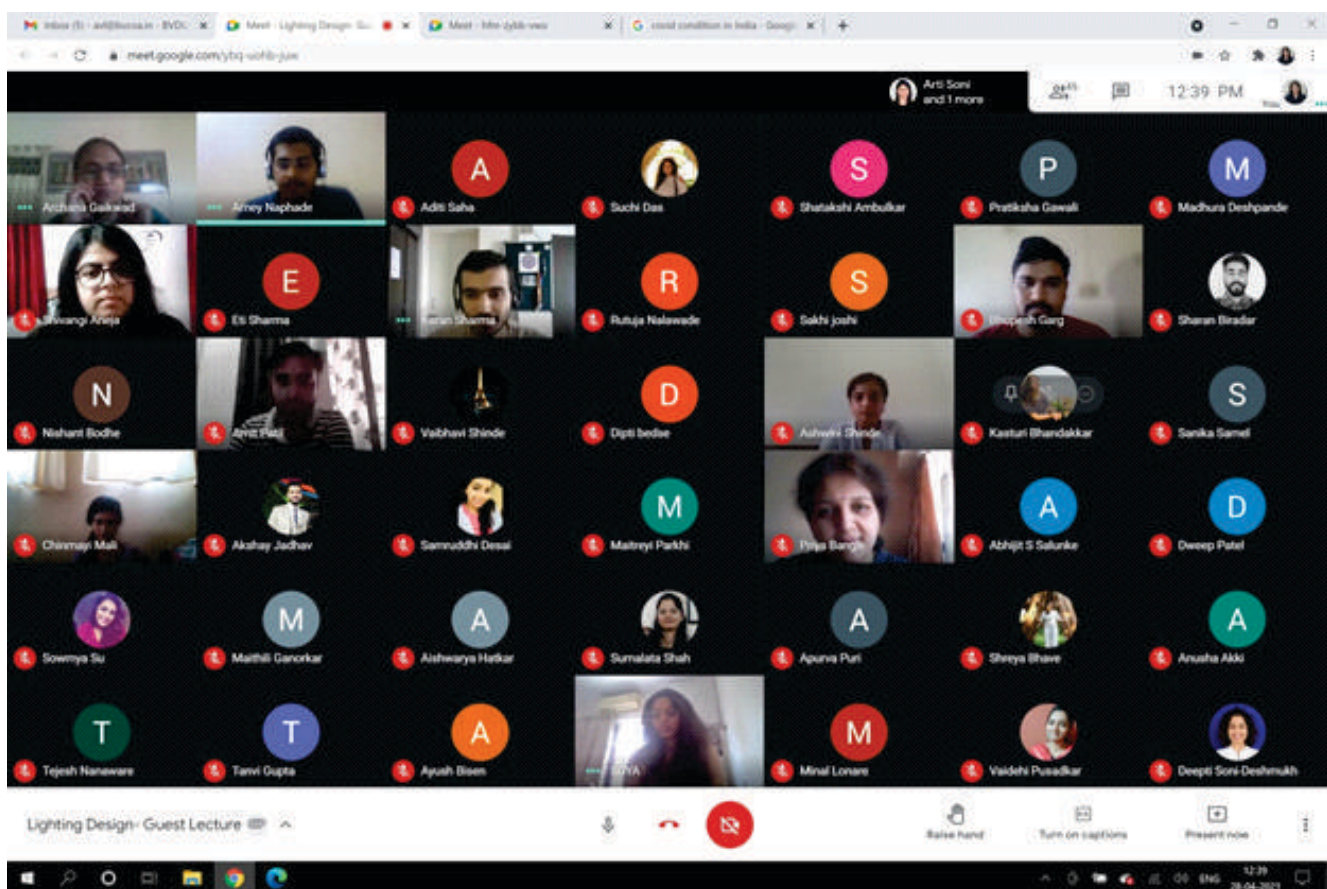


Online interactions with Professionals: Guest Lectures

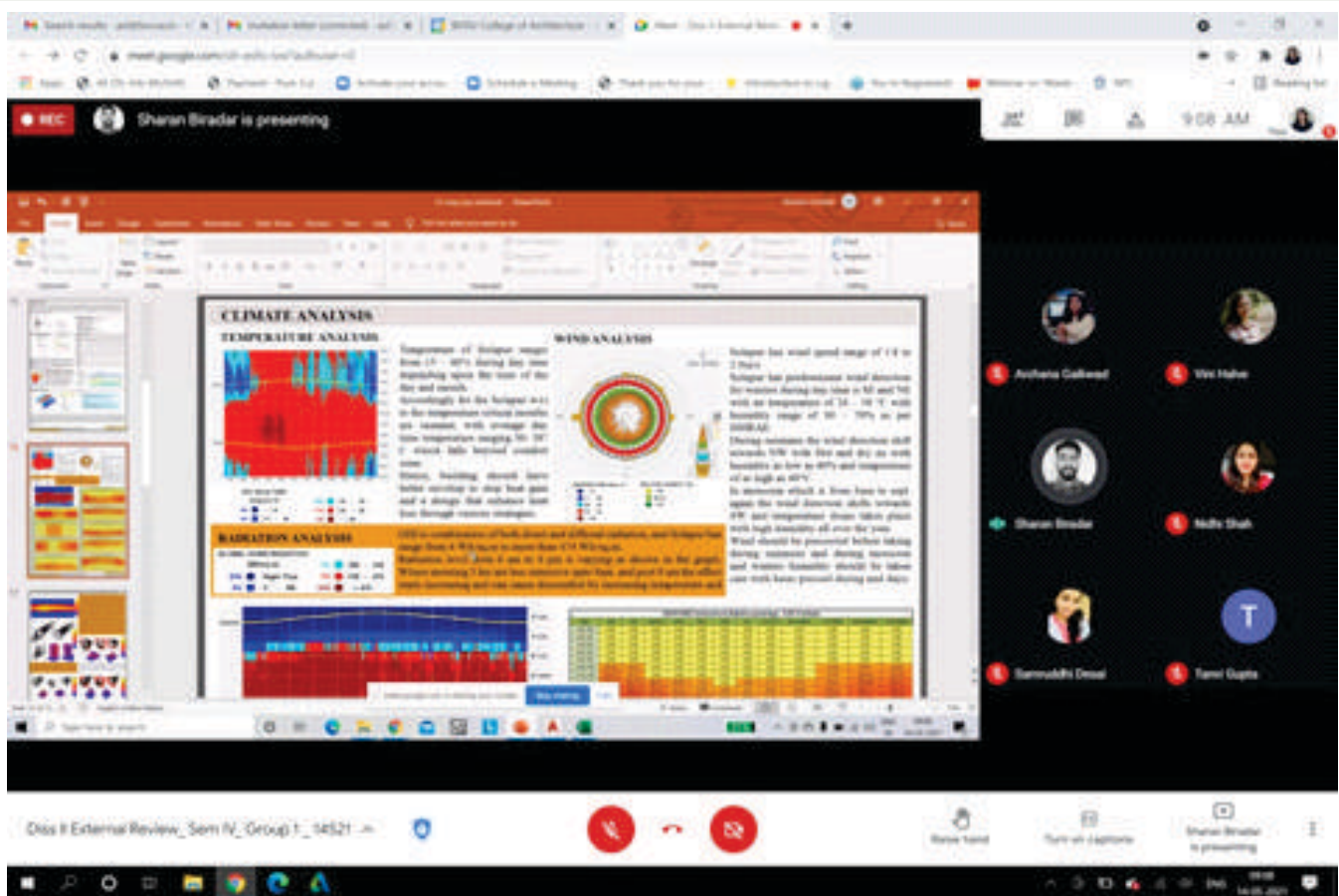




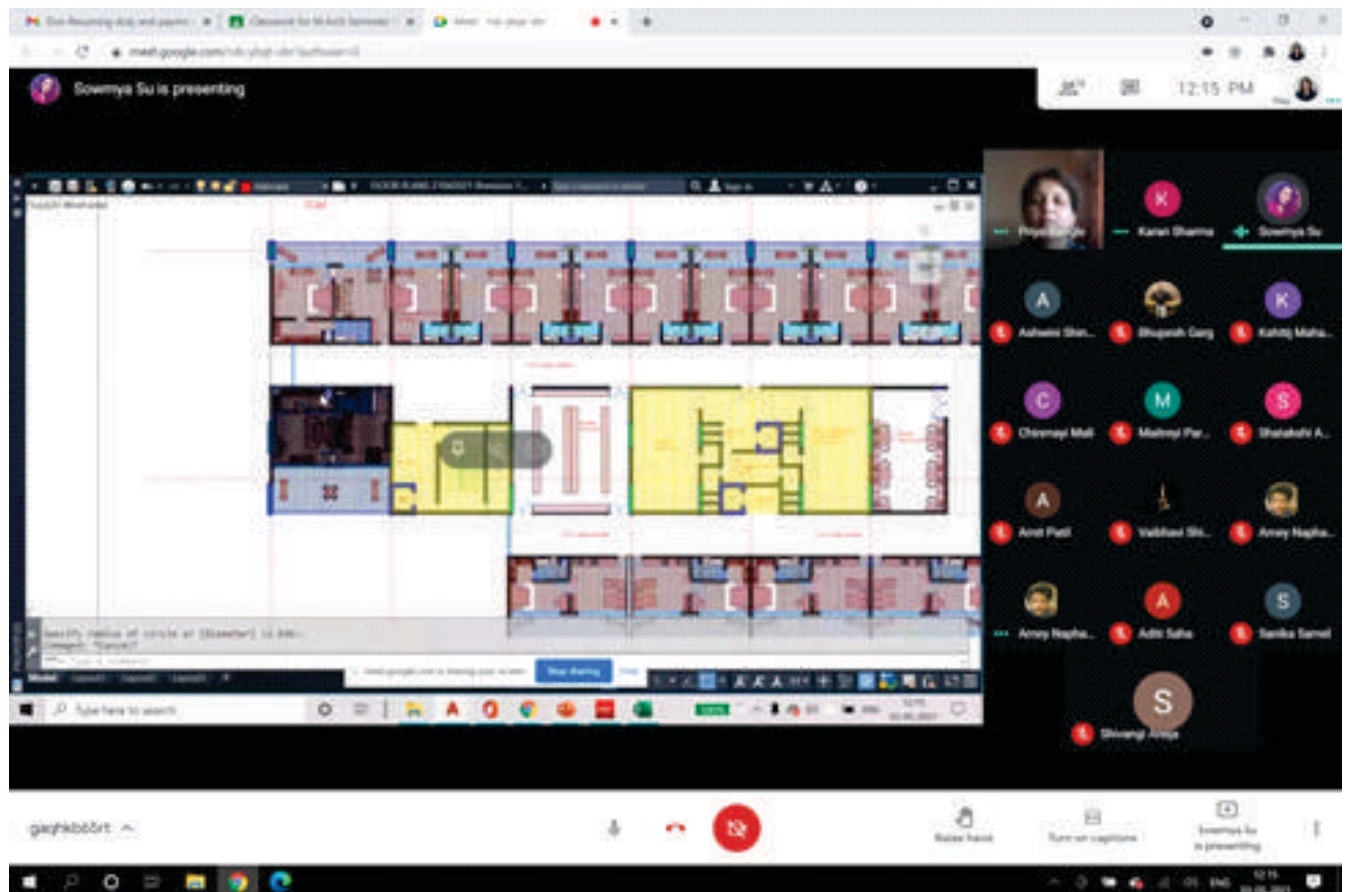
Online interactions with Professionals and subject experts



Online interactions with Professionals and subject experts



Intermediate Online juries and review with Professional experts



Intermediate Online juries and review with Professional experts



## COURSE DETAILS

College of Architecture, Pune is Constituent Unit of Bharati Vidyapeeth (Deemed to be University), Pune, India  
Approved by : Council of Architecture, New Delhi and University Grants Commission, New Delhi, AICTE

Full time course	Level	Annual Intake	Duration
Master of Architecture. <i>(Sustainable Architecture)</i>	Degree Course	20 (Twenty)	2 (Two) Years

### OBJECTIVES OF THE COURSE

#### MASTER OF ARCHITECTURE IN SUSTAINABLE ARCHITECTURE - M.ARCH. (SUSTAINABLE ARCHITECTURE)

##### EVOLUTION :

Sustainable development has been defined by the Brundtland Commission Committee (1987) as "Development that meets the needs of the present, without compromising the ability of future generations to meet their own needs." In other words, the concept of living within the capability of supporting eco system can be the basis of sustainable development. In urban context, the sustainable development has been defined as development that is non-damaging to the environment and which contributes to the city's ability to sustain its social and economic structure.

##### BROAD OBJECTIVES :

Introduction of sustainable building measures can make an important contribution in minimizing the impact of this evolution. More than 20% of the current energy consumption can be saved by 2010 by applying more ambitious standards. It also represents a considerable contribution to meeting Kyoto Protocol (up to 30 to 45% million tones of carbon dioxide per year)

Technology is the principal instrument that will facilitate more rational use of resources during the entire life- cycle of the building. It will also help in responding adequately to the various contexts of the design process such as Climate, Culture, Comfort, Energy, Environment and Ecology, taking a holistic approach and using Scientific Methodology.

##### RELEVANCE :

Architecture, which is the most demanding of the contemporary disciplines, has both an obvious artistic component and also less obvious, but not less essential, scientific component. Our responsibility to improve the quality of life also beacons us to develop scientific and mathematically based methods of design of Thermal, Luminous, Acoustic and Aqueous environments. The Energy and Environmental issues have brought a new dimension to this process.

Most important of all, an architectural design consists of an ounce of artistic inspiration (aesthetics), which has to be supported by tones of logical argument (i. e. Technology and Engineering)

**SYLLABUS:**

The syllabus focuses on the four building environments namely: Thermal, Luminous, Acoustics and Aqueous. In order to equip students with sustainable architectural practices they are introduced to various areas in the field such as energy management, evaluation criteria for green buildings, environmental laws and research methods along with design responses to each environment in detail. Internship, site visits and workshops are introduced in the syllabus to gain practical knowledge in the field.

**Broad areas of study**

- Sustainable Building Design Principles
- Sustainable Material and Technology
- Climate Responsive Architecture
- Energy Management
- Energy Systems and Efficiency
- Energy Efficient Building Design
- Energy Audit
- Environmental Impact assessment
- Evaluation Criteria for Green Buildings
- Environmental Laws and Legislation
- Research Methodology
- Sustainable Settlement Planning.
- OPEN ELECTIVES

**HIGHLIGHTS****ISLE (Indian Society of Lighting Engineers):**

A Students ISLE Students Chapter to promote industry institute interaction in the Lighting Field in terms of professional interactions, site visits, expert lectures, research opportunities and curricular activities.

**IGBC STUDENTS CHAPTER :**

Association with the Indian Green Building Council (IGBC) as a part of Industry Institute Interaction and an opportunity for the students to be a part of Green Building Movement of India.

**CLIMATOLOGICAL LABORATORY :**

Comprising latest instruments for measuring climate variables such as, Pyranometer anemometer DB and WB thermometers, wind wane and speed indicators, rainguage, luxmeter and sound meter.

**FIELD EXPERIENCE:**

- ✦ On site experience, Industrial interaction, Seminars and Workshops are organised for the students by the institute.
- ✦ Lectures of Technical Experts from various Building / Industrial Groups are arranged for students so as to upgrade their knowledge of Current Market Trends.

**FACILITIES :**

Well equipped library, well appointed laboratory, highly experienced Resource persons, furnished class rooms, Studios, Computer labs and other laboratories.

**BHARATI VIDYAPEETH (DEEMED TO BE UNIVERSITY)**  
**SAMPLE QUESTIONS FOR CET**

**DURATION : 3 HOURS**

F All questions (total 100) carry equal marks.

F Select the appropriate answer and mark it in the answer sheet as per the instructions mentioned therein.

01. One square metre (m<sup>2</sup>) equals to  
(a) 10.00 square feet      (b) 10.28 square feet
02. "Aranya" township is designed by the following Architect  
(a) Charles Correa      (b) B.V. Doshi      (c) Raj Rewal      (d) A.P Kanvinde
03. The term 'SEZ' refers to  
(a) Special Economic Zone      (b) Solar Energy Zone  
(c) Supreme Equity Zone      (d) None of these
04. The commission on urbanization (1988) was headed by  
(a) Charles Correa      (b) B.V. Doshi      (c) C. Benninger      (d) Hafeez Contractor
05. The "Greenhouse Effect" is mainly caused by the following gas  
(a) Nitrogen      (b) Methane      (c) Sulphur Oxide      (d) Carbon Dioxide
06. "Castellated" beams are used in  
(a) Concrete (long span) structures      (b) Light weight structures  
(c) Wooden Structures      (d) Steel Structures
07. The concept of "Sustainability" requires application of  
(a) Optimum use of resources      (b) Solar Passive Architecture  
(c) Recycling of wastes      (d) All of these
08. According to "Building byelaws", width of the approach road is governed by  
(a) Its location      (b) Its surface treatment  
(c) Expected intensity of traffic      (d) Length of approach road
09. The "Golden Rectangle" refers to the proportion of  
(a) 1 : 1.16      (b) 1 : 1.61      (c) 1 : 1.50      (d) 1 : 1.91
10. "Gandhinagar" township is an example of  
(a) EWS township      (b) Industrial township  
(c) Gandhian philosophy township      (d) None of these
11. The "EIA" means  
(a) Energy Intensity Assessment      (b) Energy Impact Audit  
(c) Environmental Impact Assessment      (d) None of these
12. One hectare of Area equals to  
(a) 10,000 sqm.      (b) 1,000 sqm.      (c) 1,00,000 sqm.      (d) None of these
13. A water tank having a volume of 10 cum. is able to store water upto  
(a) 1,000 liters      (b) 1,00,000 liters      (c) 10,000 liters      (d) None of these
14. A "Baffle Wall" is a functional requirement of  
(a) Chemical Factory      (b) Septic Tank  
(c) Load bearing wall      (d) All of these



## PROCEDURE AND RULES FOR ADMISSION

### 1. Computer Based Online Entrance Test - General Instructions, terms and conditions

- 1.1 **ET-M.ARCH. 2021** is a ranking examination for admission to Master of Architecture Post Graduate degree programmes for 2021-22 academic session.
- 1.2 Applicant may kindly note that mere appearance in the computer based online entrance test and inclusion of name in the merit list does not confer any automatic rights to secure admission to the programme offered by the college. The selection and admission to the programme is subject to fulfilling the admission criteria, eligibility, any such criteria as may be prescribed by the University and availability of seats to the particular programme and college at the time of counseling.
- 1.3 Applications of candidates producing false or fabricated information will not be considered
- 1.4 Before initiating online registration process, candidates should go through the Information brochure carefully for eligibility criteria, and pattern of examination etc. The information brochure shall be available at **[www.bvuniversity.edu.in](http://www.bvuniversity.edu.in)**
- 1.5 Incomplete online application, if not in accordance with instructions, will not be considered and processed. Applicant should carefully fill up all the fields during online application process and complete the payment process. Application once submitted finally, cannot be withdrawn/modified.
- 1.6 The computer based online entrance test fee, once paid, will not be refunded under any circumstances. Candidates who remain absent for the computer based online entrance test will forfeit their computer based online entrance test fee.
- 1.7 The Information brochure is subject to modification without notice, please check the website regularly for updations, if any.
- 1.8 The authorities of the institution reserves the right to withdraw permission, if any, granted inadvertently to any candidate who is not eligible to appear in the computer based online entrance test even though Admit card/Registration number has been issued.
- 1.9 The Admissions provided to candidates based on the result of the computer based online entrance test will be purely provisional and subject to the fulfillment of eligibility criteria as mentioned in the Information brochure.
- 1.10 Under no circumstance a change in computer based online entrance test centre once selected by the candidate will be allowed.
- 1.11 Candidates **MUST** bring the following documents to the test centre - (a) Printed copy of Admit Card (b) Any one of the authorized photo IDs (must be original, valid and non-expired): Aadhaar Card /PAN card/Driving license/Voter ID/Passport. The name on the photo identification must match with the name as shown on the Admit card. Candidate reporting to computer based online entrance test center without the above said requisite documents shall not be allowed to appear for the computer based online entrance test.
- 1.12 All the correspondence should preferably be addressed by e-mail. The e-mail query shall be addressed only if it is not anonymous and not vague.
- 1.13 Candidates are deemed to have read, agreed and accepted the terms and conditions in the Information brochure and on completing the online registration/application form for the computer based online entrance test.
- 1.14 In case differences of opinion or any ambiguity in interpretation and implementation of any of the instructions/terms/rules/criteria regarding the determination of eligibility/conduct of examinations/registration of candidates/ information contained herein, the same shall be referred to the Vice Chancellor of the Bharati Vidyapeeth (Deemed to be University) and his decision shall be final and binding on all concerned.
- 1.15 Any legal matters arising out of the total admission process through the All India Common computer based online entrance test of Bharati Vidyapeeth (Deemed to be University), Pune – 30 i.e. **ET-M.ARCH. 2021**, shall be within the exclusive jurisdiction of competent courts at Pune, Maharashtra State only.

## 2. GENERAL

The information and the rules given herein are applicable for admissions to the first year of two years full time Master of Architecture course of Bharati Vidyapeeth (Deemed to be University), Pune conducted at its following constituent unit.

**Bharati Vidyapeeth (Deemed to be University), College of Architecture, Pune Intake Capacity : 20**

**Duration :** The M. ARCH. course is of 2 years duration.

**Note :** Out of the sanctioned intake, 15% seats are reserved under Foreign / NRI / P.I.O. / OCI/ Institutional Quota Merit Category. Candidates seeking admissions to the seats under Foreign / NRI / P.I.O. / OCI/ Institutional Quota Merit category will have to apply separately on a prescribed application form. The application form will be available at the office of **The Registrar, Bharati Vidyapeeth (Deemed to be University), Bharati Vidyapeeth Bhavan, L.B.S. Marg, Pune-30. The form fee for this category is Rs. 1,000/- (non refundable).** Seats remaining vacant after allotment to Foreign / NRI / P.I.O./ OCI Students (based on Merit), will be allotted to Indian students under Institutional Quota on the basis of merit based on the marks obtained by them in **ET-M. ARCH.- 2021**. The last date for submission of form to this category at the above mentioned address is **1st August 2021 before 5.00 p.m.**

All the candidates seeking admissions will have to appear for computer based online Entrance Test "**ET-M.Arch 2021**" conducted by Bharati Vidyapeeth (Deemed to be University), Pune. All candidates will have to apply online & fill the prescribed application form.

## 3. ELIGIBILITY

Candidate with a minimum of 50% marks in aggregate in Bachelor of Architecture degree course or its equivalent courses recognised by Council of Architecture, New Delhi, shall be admitted to the post graduate course in Architecture.

Only those candidates who would satisfy all the eligibility requirements as mentioned above will be considered eligible to appear in the computer based online entrance test and for subsequently admission to the course.

**Note :** Candidates who are likely to appear or who have appeared for the qualifying examination, i.e. B.Arch. or equivalent from an institute recognised by Council of Architecture, New Delhi but whose results have not been declared will also be considered eligible to appear for (**ET-M.Arch 2021**). However, their admissions will be confirmed subject to the final year result. If candidate fails to fulfill the relevant eligibility requirements as mentioned above he/she will not be considered eligible for admission to the respective M.Arch. course even if he/she is placed in the merit list of the **ET-M.Arch 2021**. The candidates are advised not to submit their application forms for appearing for **ET-M.Arch 2021** if they do not fulfill any or all of the relevant eligibility requirements

## 4. BASIS OF SELECTION FOR ADMISSION

- 4.1 A Candidate desirous of seeking admission to **M.ARCH. Programme** should fulfill the minimum eligibility condition as stated in point no. 3 above.
- 4.2 He/She must have appeared for the **ET M.ARCH.-2021** computer based online entrance Test, conducted by Bharati Vidyapeeth (Deemed to be University), Pune at designated centres.
- 4.3 The Candidate shall be offered admission on the basis of his/her rank in the final merit list and availability of the seats in the programme of the college at the time of counseling and admission.
- 4.4 In case two or more candidates obtain equal marks in the **ET-M.Arch 2021**, the inter-se-merit of such candidates shall be determined in order of preference as under :

- a) First preference will be given to GATE qualified candidates and the score of the GATE Examination.
- b) If equal on the basis of aggregate marks obtained by the candidates in B.Arch. examination.
- c) If equal total marks at 12th Std. Examination.
- d) In case of tie at this level, computerised random selection of candidate will be carried out.

## 5. NATURE OF COMPUTER BASED ONLINE ENTRANCE TEST "E.T. (M. ARCH.)-2021"

The entrance test **ET M.ARCH.-2021** is a computer based online Entrance Test for admission to **M. ARCH.(S.A.) Programme** will consist of in all 100 marks. Each question carries one mark and there is no negative marking. The test is of three hours duration.

The computer based online entrance test will consists of one question paper, set in English and will contain 100 multiple choice objective-type questions. They will be set on the topics based in the B.Arch. curriculum prescribed by Council of Architecture, New Delhi. The general syllabus is mentioned below -

- a. **Architectural Design:** Theory & Principles of Design, Architectural Graphics
- b. **Building Technology:** Construction Techniques, Long Span Structure, Materials of construction, Surveying and Leveling, Theory of Structures.
- c. **Building Services:** Natural and Mechanical Ventilation, Day Lighting and Artificial Lighting, Water Supply and Sanitation, Electrification, HVAC, Fire Fighting and Acoustics.
- d. **Environment and Sustainability:** Climatology, Energy Conservation, Sustainable Architecture, Vernacular Architecture.
- e. **Professional Practice:** Valuation, Specification, estimation and Quantity Surveying.
- f. **Applied Subjects:** Architectural Graphics, Human Settlement And History Of Architecture, Town Design and Planning, Landscape Architecture, Contemporary Architecture, Modern Trends in Architecture, Computer Application - Autocad

## MODE OF CONDUCT OF COMPUTER BASED ONLINE ENTRANCE TEST

The entrance test will be conducted based on two modes:

- a) Computer centre based online test (CBT) – where in candidate has appear for the test at a designated test centre in the city provided/ preferred or allotted.

OR

- b) Remote Proctored Home based online test (RPHBT) - where in the candidate can appear for the online test from their home location provided they have the minimum hardware and software requirement.

The candidate has to choose any one of the above mode of test while filling the application form online.

## 6. COMPUTER BASED ONLINE ENTRANCE TEST SCHEDULE AND ADMIT CARDS:

The computer based online entrance test **ET-M.Arch 2021** will be held as per the dates mentioned at Important Dates page(after front page).

The admit cards will be available from seven days prior to the date of entrance test. The candidate will have to, login with their credentials provided and download their respective admit card of particular entrance test for which he/she applied for.

### If appearing for the Computer centre based online entrance test (CBT).

- 6.1 The reporting time before the gate closes shall be mentioned in the admit card. The candidate must report as per the time schedule at the test venue.



- 6.2 The candidates must bring admit card at the Computer centre based online entrance test. No candidate will be allowed entry without this Hall Ticket. The candidate is also required to bring one of the photo identification card in original viz. Voter Identity Card, Driving License, PAN Card, Passport or Adhar Card etc.
- 6.3 No candidate will be allowed to enter the Computer centre based online entrance test after the scheduled time of commencement of examination.
- 6.4 The candidates appearing for the Computer centre based online entrance test should, in their own interest, check their eligibility in all respect so as to avoid disappointment at any later stage. Your application for the Computer based Online Entrance test is "PURELY PROVISIONAL" pending detailed scrutiny of your fulfilling the eligibility conditions as mentioned in the information brochure for the programme applied. In case, it is found that the candidate does not fulfill the eligibility criteria, Online application of such candidate is liable to be rejected at any stage of admission process or even after joining in the College.

#### If appearing for Remote Proctored Home based Online test (RPHBT):

The candidate has to make prior arrangements of the minimum hardware and software required. The candidate has to appear for the test from their home location at the allotted time.

Prior to conduct of the actual test a mock-test will be held to familiarise the candidate regarding home based entrance test.

## 7. TEST CENTRES :

The "ET-M.Arch 2021" Computer centre based online Entrance test will be held in 58 centres throughout the country giving students a wide choice of test centres.

The list of cities where the Computer centre based online Entrance test are located is as below :

Sr No	City	Sr No	City	Sr No	City	Sr No	City
1	Guwahati	16	Amritsar	31	Bangalore	46	Thane
2	Patna	17	Jammu	32	Ernakulam/cochi/kochi	47	Aurangabad
3	Muzafarpur	18	Jaipur	33	Hyderabad	48	Sangli
4	Ranchi	19	Kota	34	Raipur	49	Kohlapur
5	Jamshedpur	20	Jodhpur	35	Panaji	50	Karad
6	Imphal	21	Allahabad	36	Ahmedabad	51	Nasik
7	Bhubaneswar	22	Lucknow	37	Baroda	52	Pune
8	Kolkata	23	Varanasi	38	Surat	53	Jalgaon
9	Chandigarh	24	Meerut	39	Rajkot	54	Akola
10	Ghaziabad	25	Bareilly	40	Indore	55	Ahmednagar
11	Faridabad	26	Gorakhpur	41	Bhopal	56	Latur
12	New Delhi	27	Kanpur	42	Jabalpur	57	Solapur
13	Rohtak	28	Agra	43	Amrawati	58	Srinagar
14	Karnal	29	Noida	44	Nagpur		
15	Shimla	30	Dehradun	45	Mumbai		

**\*Note: If the candidates count for a centre is less than 25, then the candidate will be allocated to the nearest available centre. NO REQUEST FOR CHANGE IN EXAMINATION CENTRE WILL BE CONSIDERED UNDER ANY CIRCUMSTANCES.**

- 7.1 The candidates must also bring along the admit card. Candidate shall appear for the entrance test at the computer centre as shown on their admit cards.
- 7.2 To attend the entrance test at the computer centre, candidates must compulsorily bring their valid admit card and any one of the valid authorized photo ID (must be original, valid and non-expired): Aadhaar Card /PAN card/Driving license/Voter ID/Passport. The name on the photo identification must match with the name as shown on the Admit card. Candidate reporting to Computer centre without the above said requisite documents shall not be allowed to appear for the Computer centre based online Entrance test.
- 7.3 Candidates have the option of selecting their city to appear for the Computer centre based online Entrance test during filling up of online application form.
- 7.4 Candidates are advised to familiarize themselves with the route and location of the Computer centre to appear for the Entrance test.
- 7.5 Possession and use of electronic devices such as Mobile Phone, Micro Phone or any other Associated Accessories, Calculator, Log Tables, Pager, Digital Diary Books etc are strictly prohibited in the Examination Hall. If any candidate is found in possession of any these devices/ documents his/her candidature is liable to be cancelled. As such the candidates should not bring Mobile Phone/ Micro Phone etc at the Computer centre based online Entrance test. BHARATI VIDYAPEETH & EXAM CENTER will not be responsible for its safe custody.
- 7.6 The authorities of Bharati Vidyapeeth (Deemed to be University) however reserve the right to make suitable changes in the test venue or schedule of the Computer centre based online Entrance test.
- 7.7 Only registered candidates with valid admit card and identity card will be allowed at the examination center
- 7.8 The candidates must reach the test centre at least one and half hour prior to the commencement of test on the day of the Computer centre based online Entrance test.

## 8. ONLINE COMPUTER BASED ENTRANCE TEST FEE:

### 8.1 Computer Based Online Entrance Test fee: Rs 1,450 /-

- 8.2 The computer based online entrance test fee shall be paid through payment gateway using internet banking mode or through debit/credit card. Service charges and other taxes for transaction as applicable by bank has to be paid by the applicant.
- 8.3 The computer based online entrance test fee, once paid, will not be refunded under any circumstances. Candidates who remain absent for the computer based online entrance test will forfeit their computer based online entrance test fee.

## 9. APPLICATION PROCEDURE:

A candidate desirous of appearing for the “E.T. (M. ARCH.)-2021” computer based online entrance test is required to complete the prescribed online application form and submit to the University along with entrance test fee.

The application form is available online at: [www.bvuniversity.edu.in](http://www.bvuniversity.edu.in)

The candidates should strictly follow the instructions given in the website while filling up the application form online, and must read the instructions carefully before filling up the online application form. Instructions are mentioned at ‘Registration Guide’ menu which is available on website. Before filling up the application form online, candidates should:

- a) Create their login credential
- b) Have a scanned image of their recent passport size photograph (Refer to guidelines mentioned on the Website)

- c) Have a scanned image of their signature, ready before filling up the online application form.
- d) Read the procedure and guidelines for online payments of test fee which is to be made through Credit Card / Debit Card/ Internet Banking. (Refer to guidelines, terms and conditions for using online payment mentioned on the website)

The candidate may then proceed to fill the form and submit the completed online application form. The candidate should take a print of payment receipt and completed online application form for reference and as a record.

Candidates should submit the completed online application form on or before the last date mentioned in the website. (See "Important dates" in the brochure.)

Candidate should ensure that all information entered during the online application process is correct.

Applications of candidates producing false or fabricated information will not be considered.

The authorities of the University do not edit /modify/alter any information entered by the candidates at the time of online application process under any circumstances. Any request for change in information there after will not be entertained.

**For any queries related to filling online application form, Email to : [cet@bharativedyapeeth.edu](mailto:cet@bharativedyapeeth.edu)  
Tel. No. 020-24407131/132/133/163**

**\*Note: NO REQUEST FOR CHANGE IN EXAMINATION DATE AND EXAMINATION CENTRE WILL BE CONSIDERED UNDER ANY CIRCUMSTANCES.**

**The university will not be responsible if the candidate has filled in and submitted an application for a different test from the one intended to appear. In such cases the university will not refund the entrance test fees. For any queries please mail us at email: [cet@bharativedyapeeth.edu](mailto:cet@bharativedyapeeth.edu)**

## **10. A) INSTRUCTIONS REGARDING COMPUTER CENTRE BASED ONLINE ENTRANCE TEST.**

### **About Question Paper:**

- 1) All questions are compulsory. for each question, four alternatives answers have been provided out of which only one answer is correct.
- 2) Only one question will be displayed on the computer screen at a time.
- 3) There is one mark for each question which will be displayed at the top right hand corner of each question.
- 4) There is no negative marking.
- 5) The question paper will appear in English language.
- 6) Candidates can attempt question in any sequence by clicking on the question number in the **Section wise Summary Report** reflecting on the left hand side of the screen.
- 7) The exam screen will continuously display the remaining time at the top right hand corner of the question paper.
- 8) The candidates may ask the Invigilator their doubts or questions before the commencement of test. No queries shall be entertained after the commencement of the examination.
- 9) Additional rough Sheet (if required) shall be provided to the candidates for rough work during the test. All the rough sheets need to be returned to the Invigilator before leaving the test venue.

### **About Answering Questions:**

- 1) In order to answer a question, you have to '**Click**' the option you think is appropriate/ correct. The alternative which has been clicked on will be highlighted and shall be treated as the answer given by you for the question.
- 2) If you do not wish to attempt the question then you should not click on any option for that question and may click '**Next**'.
- 3) You can '**Bookmark**' questions to review before submitting.
- 4) You can navigate between questions either by clicking on '**Previous/Next**' or by directly clicking on the

question numbers which are displayed as attempted/ unattempted /book marked in the **Section wise Summary Report**.

#### About Preview and Submission:

- 1) The answers are saved whenever the candidate navigates e.g. by clicking on Next/ Previous button or by clicking on other question number.
- 2) The candidates can make changes in their choice of alternative only before the paper is **auto** submitted.
- 3) Candidate can switch to any of the question by clicking on summary panel shown at the left hand side of the screen.
- 4) After the expiry of the test time, the candidates will not be able to attempt any question or check their answers. The answers of the candidate would be saved and submitted automatically by the computer system.
- 5) A "Thank you" message will appear confirming the completion and submission of the examination.

**Candidates can be debarred/ disqualified by the Chief Proctor of the Exam Centre for any of the following reasons:**

1. Creating a disturbance.
2. Impersonation - Attempting to take the examination for someone else.
3. Giving or receiving assistance of any kind during the examination and communication in any form between candidates or with outsiders.
4. Smoking or eating in the Examination Hall.
5. Attempting to tamper with the operation of the computer or meddling with system.
6. Exchanging any papers, documents or any other material with other candidates.
7. Leaving the test centre without the permission from the invigilator.
8. Using prohibited aids, items not allowed, such as:
  - o Stationary items including Pens, Pencils, Scales, Papers, Books, Notebooks, Calculators, Watch calculators, etc.
  - o Mobile phones, Pagers, Health bands, Watches, any other electronic gadgets etc
  - o Jewellery including Earrings, Finger rings, Metal Bangles, Pendants, Nose pins, Chains, Necklace etc
  - o Shoes & socks, Wallets, Sunglasses, Jackets etc are not allowed. Candidates will be asked to remove their Jackets, Footwear before entering the Test Hall.
9. Attempting to copy examination questions and /or examination responses (in any format) from the examination centre.
10. Attempting to access any unauthorized software/program during the examination.
11. Failing to follow invigilators directions.
12. Manhandling of invigilators or test centre staff.
13. Resorting to unfair means or trying to influence in any way for examination results shall be considered as a serious offence and any candidate found guilty of such offence on the report of any person duly authorized in conduct of the examination, shall be liable to have his/her name removed from the list of candidates entered for the Examination and may also be further dealt with in such manner as the examination authority may deem fit.
14. Candidates shall maintain silence while appearing for the exam. Any conversation or gesticulating or disturbance or attempt to change seats/question paper in the Examination Hall shall be deemed as unfair means.



15. If a candidate is found indulging in unfair means or impersonation, the candidature of such candidate shall be cancelled. The candidate shall be expelled from the examination by the Test Centre Administrator and such matter shall be reported to concerned authorities for appropriate action.
16. The Test Centre Administrator at the Exam Centre is authorized to debar the candidate/s from the examination centre for any misconduct.
17. A mock test will be available on the bvuniversity.edu.in website for practice for all candidates who have been issued Admit Cards for the exam.

## **B) INSTRUCTIONS REGARDING REMOTE PROCTORED HOME BASED ONLINE ENTRANCE TEST**

### **RULES AND REGULATIONS of Remote Proctored Home based Online Test**

**Note: Rules and Regulations will remain same for Mock (Practice) and Live Actual Final Test. Attempting Mock (Practice) test is mandatory, you will not be able to give your Final Final Test if you have not completed your Mock (Practice) test**

The online test will be held only through desktop / laptop.

Instructions for the CANDIDATE appearing for ONLINE EXAMINATION using their infrastructure like desktop/laptop, internet, web camera, microphone, etc.

- Exam Start Time: As per schedule sent to you through email
- Candidate will not be allowed to appear after 30 minutes from his/her scheduled time. Under no circumstances, the test can be rescheduled.
- Candidates should log in 15 minutes before the scheduled start time of the exam.
- Accessing Your Exam Online: You must have received an email from the Institute with login credentials. Candidate to keep login details safe and DO NOT share with anyone else.

Before starting the exam, please ensure the following:

- You are using a computer system equipped with Windows Operating System (version 8 and above).
- You have installed Google Chrome Browser (80.0 and above version) with cookies & popups enabled.
- There is an active & stable Internet Connection with more than 2 mbps (with high-frequency Wifi)
- There is a minimum available data pack (3GB - 4 GB)
- Your device has a working integrated web camera and microphone. A webcam is a must to take the test.
- You have your ID card (issued by Local Government Authorities / Passport / Employer ID ) ready with you for the candidate verification process. We don't issue any separate ID cards.

### **Code of Conduct:**

- Though the test is being taken at the candidates' place of stay, their conduct during the examination will be proctored using Artificial Intelligence as well as a Human proctor (invigilator) through continuous video and audio feed.
- There is a zero-tolerance policy for unethical behaviour.
- It is strongly advised that the candidate takes the examination with utmost solemnity and ensures that all the instructions are strictly followed.
- Exam authority reserves the right to disqualify any candidate who is found to be indulging in any kind of malpractice.

### **Authentication Process:**

Please go through the following 2-step verification process

- Step 1: Show your face to the camera and click submit
- Step 2: Show your ID Card (issued by Local Government Authorities / Passport / Employer ID) and click submit.
- An authorizer will connect to you for verification. This may take 20-30 minutes. You may get this message while you are waiting: "We are currently processing your authorization submission" or "You are in the queue. Please wait while your details are being authorized". Please note the exam time will not be counted during the verification process. Your actual test time will start once you start attempting the questions, so please don't panic.
- Upon authorization, you will be allowed to enter the examination interface.

#### **Examination environment rules:**

1. No other person is allowed to enter the room once your test starts.
2. The lighting in the room must be bright enough to be considered 'daylight' quality. Overhead lighting is preferred. If overhead lighting is not available, the source of light must not be behind you.
3. Please make sure your face is visible at all times with enough light on your face. Do not look away from the screen or hide/cover your mouth or face
4. You must sit at a clean desk or table.
5. The desk or walls around you must not have any writing on them.
6. The room must be as quiet as possible. No sounds (such as music or television) are permitted.
7. The following items must not be on your desk or used during your proctored exam:
  - Books • Textbooks • Notebooks • Mobile Phones or any other electronic device
8. You may keep the following with you:
  - A water bottle • Two sheets for rough work • Pen or Pencil for rough work. • Calculators
9. Please ensure that your laptop is fully charged for the examination and your webcam is working properly.

#### **The computer/laptop you use to take the examination:**

1. The computer you would be using to take the exam must not have more than one display or monitor. For example, if you usually use a laptop with a monitor connected, please disconnect your monitor and use only the laptop screen.
2. You must close all other programs or windows on your testing computer before you begin the exam.

#### **Minimum Computer/System Requirement:**

##### **I) Desktop/Laptop:**

- Internet Browser: Google Chrome version 80 & above, with cookies & popups enabled
- Video/Audio: Webcam min. 1.3 MP and a good quality Mic is required
- Operating system: Windows 8 or 10
- RAM & Processor: 4 GB+ RAM, i3 5th Generation 2.2 GHz or equivalent/higher
- Pop-up blocker: Disabled
- Uninterrupted power supply (UPS/ Inverter, etc.)

##### **II) Internet Connection:**

- Dedicated Internet and Internet Bandwidth of minimum 2 MBPS (4G/ Wi-Fi) or above + upload speed

#### **Some Do's and Don'ts:**

- Candidates are requested to keep attention on the chat window with the proctor/invigilator. You may ask

your queries related to the test with the proctor.

- Candidates must be in front of their screen at all times.
- Candidates' activities will be constantly observed, monitored, and recorded.
- The web Camera and Mic should not be covered with any article during the entire exam duration.
- Don't Position the camera too low, too high, or hooked onto a different monitor. Weird camera angles can be very distracting and unflattering during the examination. The candidate should make sure that the camera is at eye level and on the monitor which is used for the examination.
- Browsing other windows or applications is prohibited. After few warnings, the system will automatically end the exam leading to disqualification.
- **IMP: The Candidate must ensure that he/she attempted every question and reviewed the accuracy of his/her answers before submitting the paper. Once submitted (even by mistake), re-examination will not be permitted.**
- **IMP: Candidates are not permitted to logout/ switch off the computer for sake of going to the washroom and if they log out / switch-off, re-login will not be permitted.**
- **Please don't click on the taskbar or anywhere outside the test window or any notification which you get on your desktop / laptop during the test. You will get few warnings for moving away from the test window and despite that, if it repeats, your test will be terminated automatically.**
- You must not use headphones, earbuds, or any other type of listening equipment.
- You must not communicate with any other person by any means once you start taking the examination.
- You must not use a phone for any reason.
- You must not leave the room during the exam for any reason, during the test.
- Do NOT press the F5 key or refresh the screen, while you are taking the exam, as it will terminate the exam.
- Candidate must dress decently.

#### **What to do if your online exam is interrupted?**

- In case the candidate gets disconnected from the exam for any reason, try logging out and in again. If you continue to face technical issues, please email immediately at [helpdesk@onlineregistrationform.org](mailto:helpdesk@onlineregistrationform.org) with your Registration Id and Subject ID
  1. If you are not able to log in on the examination portal.
  2. In case you have any issue with starting the examination.
  3. If examination will get disconnected if your webcam gets closed due to any reason.
  4. In case of any system/internet issue or power failure at your place during the examination, then

#### **Please email immediately at [helpdesk@onlineregistrationform.org](mailto:helpdesk@onlineregistrationform.org) with your Registration Id and Subject ID**

- If you get repeated warnings, your test will be terminated automatically. To resume the test, please mail at [helpdesk@onlineregistrationform.org](mailto:helpdesk@onlineregistrationform.org)

#### **Privacy:**

During the remote proctored Final Test, Images/Videos/Sounds of the candidates and their computer systems will be captured and stored for Final Test proctoring purposes. It is envisaged that candidates who register for the remote proctored Final Test agree for the same.

### **11. DECLARATION OF RESULT:**

The merit list of **computer based online entrance test (M. ARCH.)-2021** (Based on 100 marks) will be declared as per the dates mentioned at Important Dates page(after front page). Separate merit list will be prepared for Regular category and Foreign/NRI/PIO/OCI/ Institutional Quota Merit Category.

The merit list of computer based online entrance test will be declared and displayed at website [www.bvuniversity.edu.in](http://www.bvuniversity.edu.in)

It is not possible to send individual invitation for counselling to the candidates. It shall be the responsibility of the individual candidate to see their own merit number and appear for the counselling at the centre of his/her choice as per the dates mentioned at Important Dates page(after front page).

The merit list of computer based online entrance test will be declared and displayed at [www.bvuniversity.edu.in](http://www.bvuniversity.edu.in)

## 12. COUNSELLING AND ON THE SPOT ADMISSIONS:

The counselling and on the spot admissions session will be held at **Bharati Vidyapeeth (Deemed to be University), College of Architecture, Pune-Satara Road, Pune 411 043.**

(Tel. No. 020- 24376986,24375687).

**12.1 The counselling schedule** will be held as per the dates mentioned at Important Dates page(after front page):  
candidate must report for counselling at 9.00 a.m. only, on the date of the counselling at the respective centers.

**FAILURE TO REPORT FOR COUNSELLING ON THE SCHEDULED DATE AND TIME WILL RESULT IN INSTANTANEOUS CANCELLATION OF A CLAIM OF THE CANDIDATE TO THE SEAT.**

The candidate must note that appearance for the computer based online entrance test and inclusion of name in the merit list does not necessarily mean that he/she will get admission to the college & course.

Individual counselling letters are not going to be sent. It shall be the responsibility of the individual candidate to see their own merit number and appear for the counselling at the centre as per the schedule. The candidate should bring along with them proof of having appeared for the **E.T. (M. ARCH.)-2021** computer based online entrance test such as Admit Card & or photo copy of application form / Demand Draft etc.

The candidate will be called for counselling as per their merit number and will be offered a seat as per availability of the seat to the programme.

Only the candidate and one of his parents/guardian will be allowed into the hall where counseling is held. The candidates will be called in the order of their ranking in the merit list and offered the seats to the relevant course available at that point of time.

If any candidate finds it impossible to be physically present for the counseling due to unavoidable circumstances, he/she may authorise any other responsible individual to represent him/her at the counseling. This representative must carry with him/her the letter of authorisation in the format given in Annexure III as well as all the documents listed. If the candidate or his / her representative fails to report for the counseling on the date and the time mentioned in the schedule of counseling his / her claim for admission to the relevant M.Arch. course will be forfeited.

**12.2** The following certificates in original along with self-attested two copies each of the same are to be submitted at the time of counselling and on the spot admission.

You are also required to submit two photos of the candidate in addition to the one fixed on the form.

You are also required to submit two attested photocopies, arranged in order, of each of the following.

- i) Statement of marks of final year B.Arch. examinations.
- ii) Statement of marks of all earlier years.
- iii) Passing Certificate of B.Arch. Course.
- iv) Statement of marks of GATE Examination.
- v) Medical fitness certificate
- vi) Statement of marks of 10 + 2 examination
- vii) Migration Certificate
- viii) Caste Certificate (For SC/ST candidates only)



- ix) Caste validity certificate issued by competent authority (For SC/ST candidates only)
  - x) Transfer Certificate (Leaving Certificate)
  - xi) Recommendation letter from the institution.
  - xii) L.C. from last institute of Graduation.
  - xiii) GAP Certificate (Where applicable)
  - xiv) Printouts of anti-ragging undertaking signed by the candidate and counter signed by the parent / guardian according to **Annexure - II**.
  - xv) Demand Draft of Entire Fees in favour of **"The Principal, Bharati Vidyapeeth College of Architecture, Pune payable at Pune"**.
- 12.3 After scrutiny of their certificates, the candidates are offered admission according to their rank and availability of seats.

### 13. FEE STRUCTURE for 2021-2022 only :

The fees to be paid for the first year of the **M. ARCH.** Programme are given below--

Category	Total (per year)
Regular : GATE Candidate	₹ 75,000/-
Regular : Non-GATE Candidate	₹ 1,50,000/-
Regular : Sponsored	₹ 1,50,000/-
Institutional Quota Merit Category	₹ 1,60,000/-
Foreign / NRI/PIO/OCI	US \$ 6,000

**\*Note : The Fees shall be revised upwards @ 5% per annum.**

#### Mode of Payment of Fees shall be as given below

The fee is to be paid through Bank Draft of any Nationalized bank drawn in the name of **"The Principal, Bharati Vidyapeeth College of Architecture, Pune payable at Pune"**.

#### The details of payment through online mode will be informed.

At the time of admission a candidate has to pay library deposit. This deposit shall be refunded upon completion of the course.

If a candidate fails to confirm admission given to him/her, the same shall stand cancelled and the resultant vacancy will be offered to the next eligible candidate from the list. However, if candidate is unable to report in person, he /she can depute a representative with an authority letter signed by the candidate (appended in this brochure) along with requisite documents under sec. 12 above and Demand Draft of fees.

There are a few seats available in the hostel which will be allotted on first come first served basis.

Those who are desirous of getting admission to the hostel will be required to pay the entire amount of rent for the year as well as the mess charges for the entire academic year at the time of admission only. The details of hostel fees will be given in counselling letter. The payment for the hostels should be made by separate Demand Draft.

### 14. REFUND OF FEES:

If the student chooses to withdraw from the program of studies in which he/she is enrolled, the refund of the fees paid will be made as per the following UGC guidelines.

Sr. No.	Percentage of Refund of Aggregate Fees*	Point of time when notice of withdrawal of admission is submitted to the university
1	100%	15 days or more, before the formally- notified last date of admission.
2	90%	Less than 15 days before the formally- notified last date of admission.
3	80%	15 days or less, after the formally notified last date of admission.
4	50%	30 days or less, after the formally notified last date of admission.
5	0%	More than 30 days after the formally notified last date of admission.

\*(inclusive of course fees but exclusive of caution deposit)

- In case of (1) in the table above, the University shall deduct Rs. 5,000/- as processing charges from the refundable amount.
  - Any student who withdraws from the course as mentioned in Sr. No.5 and thereafter will be required to remit to the University, in addition to the amount already forfeited, the course fee payable for the remaining period of the course.
  - In case of Foreign/NRI candidates, the refund will be made in accordance with RBI/ Foreign exchange regulations.
  - All refunds will be processed by the respective units of the University upon receiving the approval from the Registrar based on the recommendation of the head of the Institution. Refund will be made only after the candidate has surrendered the ID card, original fee receipt and the dues clearance certificate.
  - Application and Entrance Test Fees, wherever applicable, once remitted shall NOT be refunded under any circumstances.
  - The refund information given above is indicative only and Bharati Vidyapeeth (Deemed to be University) reserves the right to make changes as per the notifications received from the concerned statutory / regulatory authorities from time to time.
- \*\* The date of opening of the college shall be deemed to be the last date of admission for the limited purpose of admission and refund of fees.

## 15. CONDUCT AND DISCIPLINE:

If any student is found indulging in antinational activities, or in activities that run contrary to the letter and spirit of the provisions of Acts and Laws enforced by the Government, or any activity that causes his/her behavior to be contrary to rules of discipline, will be liable to be expelled from the College forthwith without any notice by the Principal of the College.

If any of the statements made in application form or any information supplied by the candidate in connection with his/her admission is, at any time, found to be false or incorrect and willful suppression of facts, his/her admission will be cancelled forth with. The fees will be forfeited and he/she may be expelled from the College by the Principal and prosecuted, if deemed necessary.

Each of the candidates seeking admission in the College is required to give the following undertaking at the time of admission:-

- A) "I have read all the Rules of Admission for the current year and after fully understanding these rules, I have

filled in this application form for admission for the current year.

- B) The information given by me in my application is true to the best of my knowledge and belief.
- C) I have not been debarred from appearing at any examination conducted by any Government constituted or Statuary autonomous examination authority in India.
- D) I fully understand that the Principal of the College will have right to expel, rusticate me from the College for any infringement of the Rules of good conduct and discipline in general and particularly the ones referred to above and the rules of good conduct and discipline prescribed by the College / University and in the undertaking given above."

## 16. MISCELLANEOUS:

- 16.1 The candidates are informed that the medium of instruction, for all programmes is English.
- 16.2 At the time of seeking admissions, a candidate will be provisionally admitted to Programme at the College subject to the production of the Provisional Eligibility Certificate from the University.
- 16.3 The Institution shall have the right to satisfy about the conduct and character of a candidate by verifying antecedents of a candidate through the appropriate police-authority, before admitting him/her to the College.
- 16.4 The Attention of the candidates is particularly invited to the provisions of rules regarding the eligibility of candidates for admission to the **E.T. (M. ARCH.)-2021** Programme. If at any stage it is found that a candidate is not eligible either for admission to **E.T. (M. ARCH.)-2021** Programme, his/her candidature and admission even if granted provisionally will be cancelled forthwith.
- 16.5 Differences of opinion and disputes arising in the interpretation and implementation of the clauses in this Brochure, if any, will be referred to the Vice-Chancellor of the Bharati Vidyapeeth (Deemed to be University), Pune and his decision shall be final and binding on all the concerned.



**D E C L A R A T I O N**

Annexure - I

I, \_\_\_\_\_ son/daughter of

\_\_\_\_\_ hereby solemnly affirm that the following statements made by me are true to the best of my knowledge and belief,

- A) I am citizen of India/ I am citizen of..... (Name of the country)
- B) I have studied B.Arch. and its equivalent and have passed the qualifying examination.
- C) I have studied and understood the rules governing counseling, admission procedure, fee structure and agree to abide by these rules.
- D) If admitted to Bharati Vidyapeeth (Deemed to be University), College of Architecture, Pune, I will abide by all its rules and regulations, especially those regarding discipline, attendance, dress code, examinations and payment of fees. I understand that failure to comply with the rules and regulations will invite an appropriate disciplinary action from the institutional authorities.
- E) I will not involve myself in any act of ragging during the course of my education in this University. I understand that involvement in ragging would result into cancellation of my admission to the course.

Name of the candidate : \_\_\_\_\_

Date : \_\_\_\_\_

Place : \_\_\_\_\_  
candidate

Signature of the

I, \_\_\_\_\_

the father/mother/guardian of \_\_\_\_\_, an applicant for admission to M.Arch.(SA) course at Bharati Vidyapeeth (Deemed to be University), hereby solemnly affirm that all the above statements made by son/daughter/ward are true to the best of my knowledge and belief. I will be responsible for the payment of his/her fees on time and for his/her conduct.

Name of the parent/guardian : \_\_\_\_\_

Relationship to candidate : \_\_\_\_\_

Date : \_\_\_\_\_

Address with Phone No.

Signature of the Parent/Guardian

\_\_\_\_\_

\_\_\_\_\_

\_\_\_\_\_

\_\_\_\_\_

## IMPORTANT NOTICE

The students and the parents will have to submit the printouts of antiragging undertaking online on the following websites

**website 1: [www.antiragging.in](http://www.antiragging.in)**

**2: [www.amanmovement.org](http://www.amanmovement.org)**

This has to be submitted immediately after the conformation of the admission.

**Note :**

As per the directions of Hon'ble Supreme Court of India Order No. SLP(C) No. 24295/2004 and SLP No. 143656/2005, WP (C) No. 173/2006 and SLP(C) No. 24296-24299/2004 all the students are hereby informed the following.

"If any incidents of ragging comes to the notice of the authority, the concerned students shall be given liberty to explain and if his explanation is not found satisfactory the authority would expel him from the institution."

All the students should note the above directives from the Supreme Court.

Registrar  
(Bharati Vidyapeeth Deemed University)

## AUTHORISATION FOR REPRESENTATIVE

I, \_\_\_\_\_, son /daughter of \_\_\_\_\_, being unable to attend the counseling session for admission to the M.Arch. (SA) course in July, 2021, hereby authorize \_\_\_\_\_ son/daughter of \_\_\_\_\_, whose photograph is affixed below and who will sign as shown below, to represent me at the counseling and on-the-spot-admission. I hereby declare that the decision made by this authorised representative will be irrevocable and that it will be final and binding on me. This authorised representative will present all the necessary documents, pay the appropriate fees and complete all the necessary formalities on my behalf.

Name of the candidate : \_\_\_\_\_

(IN CAPITAL LETTERS)

Seat No.(ET MARCH-2021 Examination): \_\_\_\_\_

Place: \_\_\_\_\_

Date: \_\_\_\_\_

Reason for absence : \_\_\_\_\_

Specimen signature of the Representative

A recent Passport size  
photograph of the  
representative should  
be affixed here.

Signature of the Candidate

A recent Passport size  
photograph of the  
candidate should  
be affixed here.



# Bharati Vidyapeeth, Pune

Bharati Vidyapeeth Bhavan, Lal Bahadur Shastri Marg, Pune - 411 030.  
Phone : (020) 24325701, 24322279 Fax : (020) 24339121



**Dr. PATANGRAO KADAM** M.A., LL.B., Ph.D.

● Founder-Chancellor, Bharati Vidyapeeth & Bharati Vidyapeeth (Deemed to be University), Pune

## AT A GLANCE

### EDUCATIONAL CAMPUSES :

● Pune ● Navi Mumbai ● Navi Delhi ● Panchgani (Satara) ● Sangli ● Karad ● Kolhapur ● Solapur ● Jawhar ● Jat

### BHARATI VIDYAPEETH (DEEMED TO BE UNIVERSITY)

★ Accredited with 'A+' Grade (2017) by NAAC ★ ★ **Category-I** University Status by UGC ★

★ 'A' Grade University Status by MHRD, Govt. of India ★ ★ NIRF Ranking - **62** ★

● Medical College, Pune ● Dental College & Hospital, Pune ● College of Ayurved, Pune ● Homoeopathic Medical College, Pune ● College of Nursing, Pune ● Yashwantrao Mohite College of Arts, Science and Commerce, Pune ● New Law College, Pune ● Social Sciences Centre (M.S.W.), Pune ● Yashwantrao Chavan Institute of Social Science Studies & Research, Pune ● Research and Development Centre in Pharmaceutical Sciences & Applied Chemistry, Pune ● College of Physical Education, Pune ● Institute of Environment Education & Research, Pune ● College of Engineering, Pune ● Poona College of Pharmacy, Pune ● Institute of Management & Entrepreneurship Development, Pune. ● Rajiv Gandhi Institute of Information Technology & Bio-Technology, Pune ● Interactive Research School for Health Affairs, Pune. ● Medical College & Hospital, Sangli. ● Dental College & Hospital, Navi Mumbai. ● Institute of Management & Research, New Delhi; ● College of Architecture, Pune; ● Institute of Hotel Management & Catering Technology, Pune; ● Yashwantrao Mohite Institute of Management, Karad; ● Institute of Management, Kolhapur; ● Institute of Management & Rural Development Administration, Sangli. ● Abhijit Kadam Institute of Management and Social Sciences, Solapur. ● Dental College & Hospital, Sangli ● College of Nursing, Sangli ● College of Nursing, Navi Mumbai.

### FACULTIES / DISCIPLINES :

● Arts ● Science ● Commerce ● Engineering ● Medicine ● Dentistry ● Management ● Pharmaceutical Science ● Ayurved ● Homoeopathic ● Nursing ● Hotel Management ● Law ● Social Sciences ● Social Work ● Architecture ● Environmental Sciences ● Physical Education ● Kala (Art) ● Agriculture ● Biotechnology

### INSTITUTE BRANCHES :

● Research Institutes - 3 ● Colleges (including proposed 2) : 50 ● Technical Institutes : 8 ● Junior Colleges : 15 ● Primary Schools and High Schools (Marathi) : 40 ● Pre-Primary Schools and Primary Schools (English) : 20 ● Balvikas Mandir : 4 ● Public School : 1 ● Adivasi Vikas Ashram Shala : 1 ● I.T.I.(Girls) : 1 ● Other Sections : 17

### ASSOCIATE INSTITUTIONS :

● Bharati Vidyapeeth English-Maths Exam Department ● Bharati Vidyapeeth's Bharati Printing Press ● Bharati Sahakari Bank Ltd. ● Bharati Madhyawarti Sahakari Grahak Bhandar Ltd. ● Sonhira Sahakari Sakhar Karkhana Ltd., Wangi, Kadegaon, Dist. Sangli ● Sagarshwar Sahakari Soot Girni Ltd., Kadegaon, Dist. Sangli ● Krishna Veral Sahakari Soot Girni Ltd., Kundal-Palus, ● Sou. Vijaymal Patangrao Kadam Mahila Auodyogik Sahakari Santha, Kadegaon, Dist. Sangli ● Mahatma Gandhi Hospital & Research Centre ● Bharati Vidyapeeth Medical Foundation ● Bharati Hospital & Research Centre ● Eye Bank ● Mobile Health Care Unit & Ambulance ● Foundation for Rural Development ● Bharati Vidyapeeth Krida Pratishthan ● Bharati Vidyapeeth Kala Academy ● Sonhira Milk Producers and Allied Agro Co-op. Soc. Ltd., Kadegaon ● Sonhira Co-op. Poultry Society Ltd., Kadegaon, Dist. Sangli



**Bharati Vidyapeeth**  
(Deemed to be University) Pune, India.

Bharati Vidyapeeth Bhavan, Lal Bahadur Shastri Marg, Pune - 411 030.

Phone No. : 020 24407131/132/133

Fax No. : 020-24329675

Website : [www.bvuniversity.edu.in](http://www.bvuniversity.edu.in)

E-Mail : [cet@bharatividyaapeeth.edu](mailto:cet@bharatividyaapeeth.edu)

